

APP CRS <b>230°</b>	Rwy Idg TDZE Apt Elev	<b>5001</b> <b>74</b> <b>74</b>
------------------------	-----------------------------	---------------------------------------

# RNAV (GPS) RWY 23

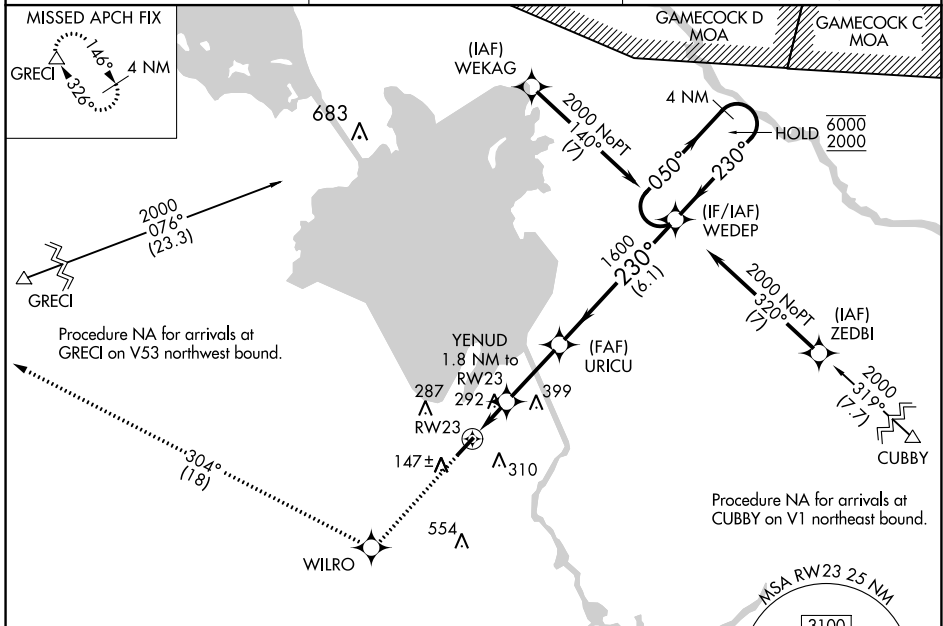
BERKELEY COUNTY (MKS)

RNP APCH - GPS.

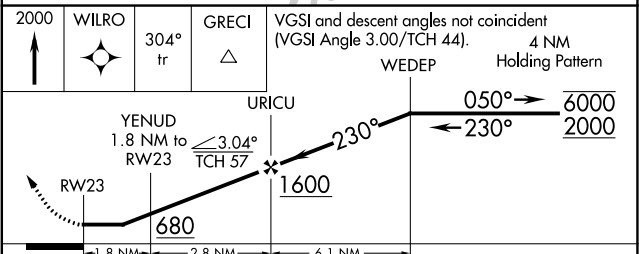
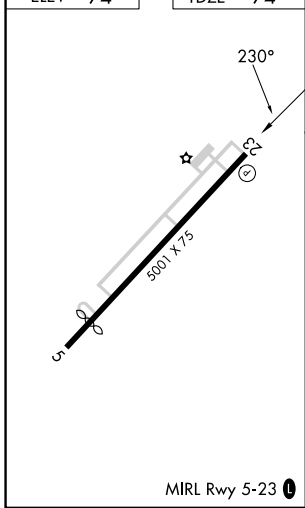
**Procedure NA at night. Rwy 23 helicopter visibility reduction below 1 SM NA.**  
**When local altimeter setting not received, use Charleston AFB/Intl altimeter setting: increase all MDAs 60 feet and increase LNAV visibility Cat C and D and Circling visibility Cat C and D ¼ SM.**

**MISSED APPROACH:** Climb to 2000 direct WILRO and on track 304° to GRECI and hold.

AWOS-3 <b>119.175</b>	CHARLESTON APP CON <b>121.275 379.925</b>	UNICOM <b>123.05</b> (CTAF) <b>0</b>
--------------------------	--	---



ELEV <b>74</b>	TDZE <b>74</b>
----------------	----------------



CATEGORY	A	B	C	D
LNAV MDA	560-1	486 (500-1)	560-1 <sup>3</sup> / <sub>8</sub>	486 (500-1 <sup>3</sup> / <sub>8</sub> )
CIRCLING	580-1 506 (600-1)	620-1 546 (600-1)	700-1 <sup>3</sup> / <sub>4</sub> 626 (700-1 <sup>3</sup> / <sub>4</sub> )	860-2 <sup>1</sup> / <sub>2</sub> 786 (800-2 <sup>1</sup> / <sub>2</sub> )

SE-2, 31 OCT 2024 to 28 NOV 2024

SE-2, 31 OCT 2024 to 28 NOV 2024