

WAAS CH 72831 W23A	APP CRS 228°	Rwy Idg TDZE Apt Elev	3503 1030 1031
----------------------------------------	------------------------	-----------------------------	-------------------------------------------

RNAV (GPS) RWY 23

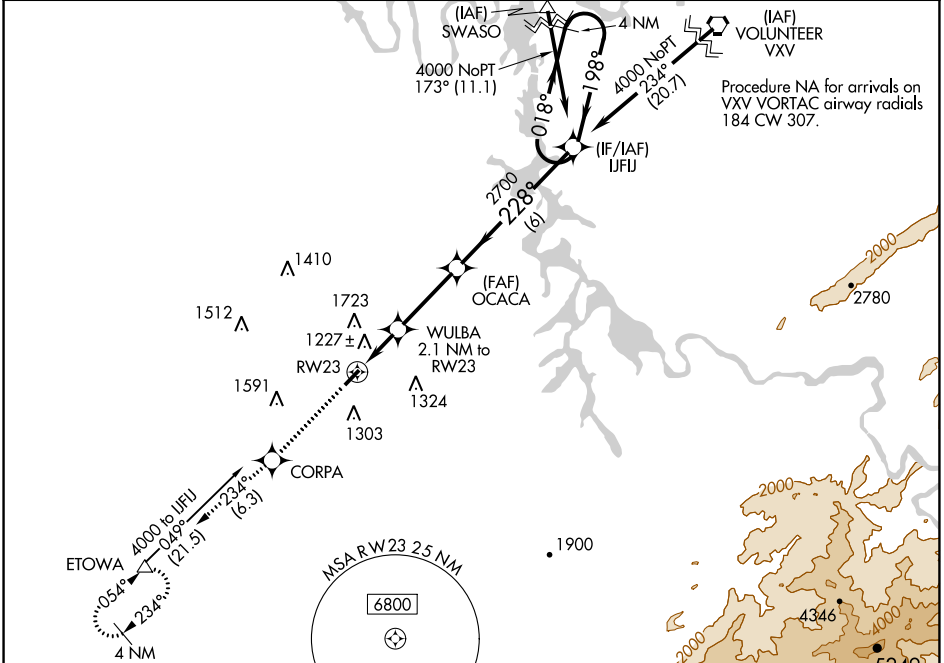
MONROE COUNTY (MNV)

RNP APCH - GPS.

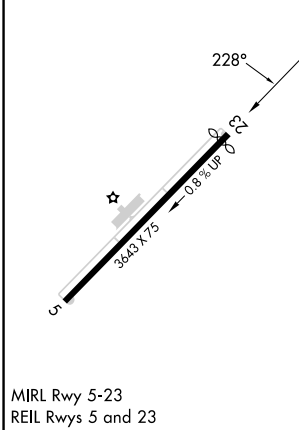
⚠ Baro-VNAV NA when using Mc Ghee Tyson altimeter setting. For uncompensated Baro-VNAV systems, LNAV/VNAV NA below -17°C or above 54°C. Circling NA NW of Rwy 5-23. When local altimeter setting not received, use Mc Ghee Tyson altimeter setting and increase all DA 64 feet and all MDA 80 feet and increase LPV all Cats, LNAV/VNAV all Cats, LNAV Cat C, and Circling Cat C visibility ¼ mile. Rwy 23 helicopter visibility reduction below 1 SM NA. Procedure NA at night.

MISSED APPROACH:
Climb to 3000
direct CORPA on
track 234° to
ETOWA and hold.

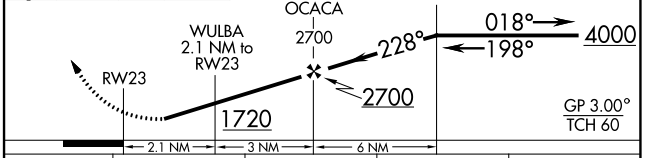
AWOS-3 118.475	KNOXVILLE APP CON 123.9 353.6	UNICOM 123.0 (CTAF)
--------------------------	-----------------------------------------	-------------------------------



ELEV 1031	TDZE 1030
-----------	-----------



3000	CORPA	tr 234°	ETOWA	VGSI and RNAV glidepath not coincident (VGSI Angle 3.00/TCH 20).	4 NM Holding Pattern
------	-------	---------	-------	------------------------------------------------------------------	----------------------



CATEGORY	A	B	C	D
LPV DA		1376-1 ¹ / ₈	346 (400-1 ¹ / ₈)	NA
LNAV/VNAV DA		1548-1 ³ / ₄	518 (600-1 ³ / ₄)	NA
LNAV MDA	1480-1	450 (500-1)	1480-1 ³ / ₈ 450 (500-1 ³ / ₈)	NA
CIRCLING	1620-1	589 (600-1)	1640-1 ³ / ₄ 609 (700-1 ³ / ₄)	NA