

WAAS CH <b>40408</b> <b>W17A</b>	APP CRS <b>165°</b>	Rwy Idg TDZE Apt Elev	<b>5002</b> <b>607</b> <b>610</b>
--	------------------------	-----------------------------	---

# RNAV (GPS) RWY 17

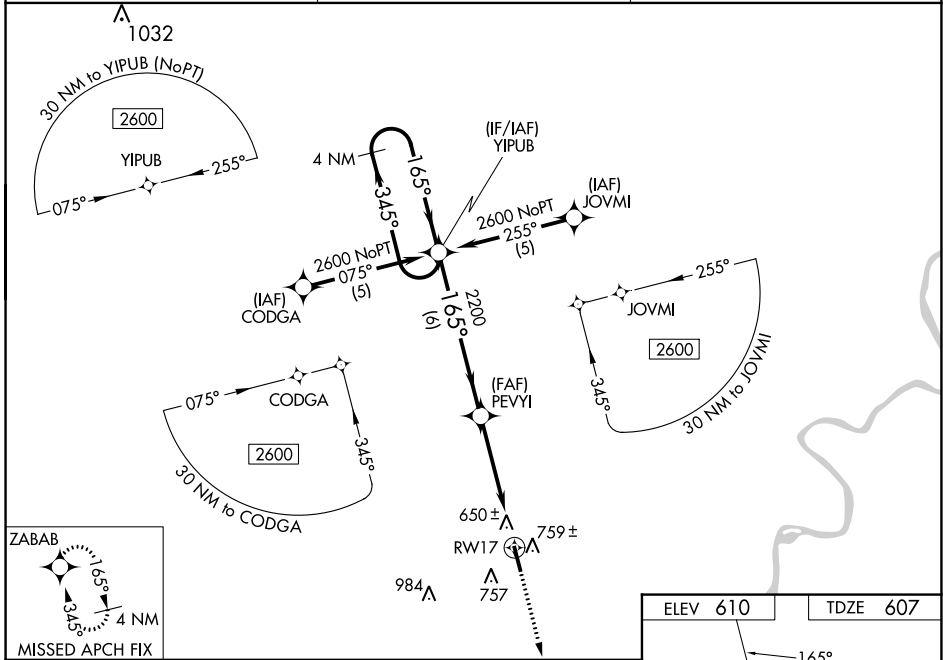
ROBERT SIBLEY (SZY)

RNP APCH - GPS.

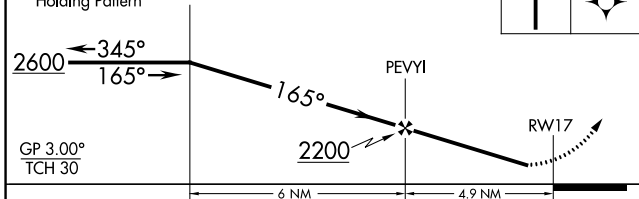
**NA** Baro-VNAV NA when using Mc Kellar-Sipes Rgnl altimeter setting. For uncompensated Baro-VNAV systems, LNAV/VNAV NA below -16°C or above 47°C. Helicopter visibility reduction below 1 SM not authorized. When local altimeter setting not received, use Mc Kellar-Sipes Rgnl altimeter setting: increase LPV DA to 959 and all visibilities ¼ SM, increase LNAV/VNAV DA to 1153 and all visibilities ¼ SM; increase all MDAs 100 feet and LNAV visibility Cat C and Circling visibility Cat D ¼ SM, and LNAV visibility Cat D ½ SM. Straight-in Rwy 17 NA at night, Circling Rwy 17, 35 NA at night.

**MISSED APPROACH:**  
Climb to 2600 direct ZABAB and hold.

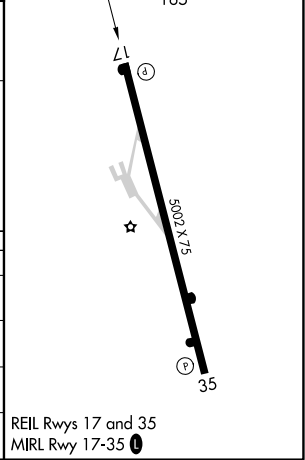
AWOS-3 <b>118.425</b>	MEMPHIS CENTER <b>124.35 318.1</b>	UNICOM <b>122.7 (CTAF) 0</b>
--------------------------	---------------------------------------	---------------------------------



4 NM Holding Pattern YIPUB VGSI and RNAV glidepath not coincident (VGSI Angle 3.00°/TCH 29).



ELEV 610	TDZE 607
----------	----------



CATEGORY	A	B	C	D
LPV DA	861-1		254 (300-1)	
LNAV/VNAV DA	1055-1¾		448 (500-1¾)	
LNAV MDA	1020-1	413 (500-1)	1020-1¼	413 (500-1¼)
CIRCLING	1060-1 450 (500-1)	1080-1 470 (500-1)	1080-1½ 470 (500-1½)	1300-2¼ 690 (700-2¼)

REIL Rwy 17 and 35  
MRL Rwy 17-35 0

SE-1, 31 OCT 2024 to 28 NOV 2024

SE-1, 31 OCT 2024 to 28 NOV 2024