

WAAS CH 97635 W05A	APP CRS 049°	Rwy Idg TDZE 40 Apt Elev 40	6005
--	------------------------	---	-------------

RNAV (GPS) RWY 5

GEORGETOWN COUNTY (GGE)

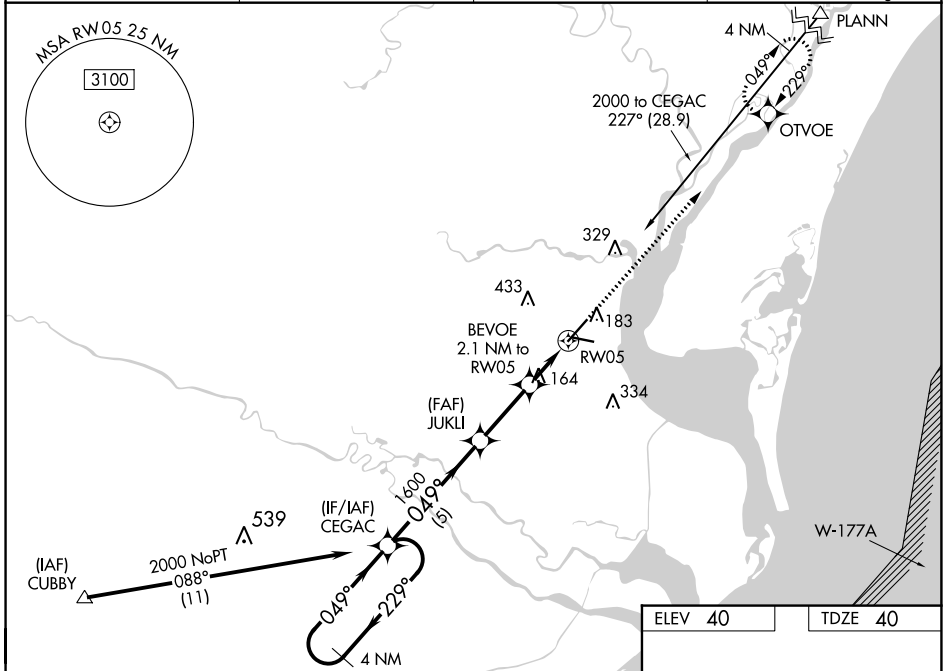
RNP APCH.

For uncompensated Baro-VNAV systems, LNAV/VNAV NA below -15°C or above 54°C. Rwy 5 helicopter visibility reduction below 3/4 SM NA. For inop ALS, increase LNAV/VNAV visibility Cats A/B to 7/8 SM. Inop table does not apply to LPV all Cats. Circling Rwy 11, 29 NA at night.

ODALS

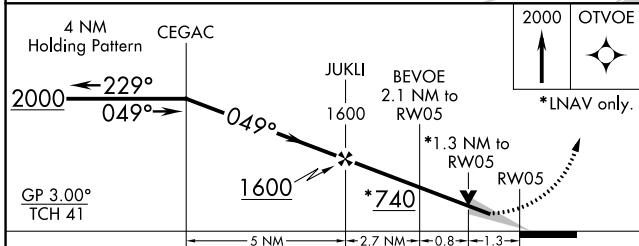
MISSED APPROACH: Climb to 2000 direct OTVOE and hold.

AWOS-3 118.275	MYRTLE BEACH APP CON ★ 127.4 257.95	GCO 121.725	UNICOM 123.0 (CTAF)
--------------------------	---	-----------------------	-------------------------------



SE-2, 31 OCT 2024 to 28 NOV 2024

SE-2, 31 OCT 2024 to 28 NOV 2024



ELEV 40	TDZE 40
---------	---------

2000 OTVOE
 *LNAV only.
 MRL Rwy 11-29
 MRL Rwy 5-23
 REIL Rwy 5

CATEGORY	A	B	C	D
LPV DA		290-3/4	250 (300-3/4)	
LNAV/VNAV DA		304-3/4	264 (300-3/4)	
LNAV MDA	480-3/4	440 (500-3/4)	480-1 1/8	440 (500-1 1/8)
CIRCLING	500-1	520-1	740-2	740-2 1/4
	460 (500-1)	480 (500-1)	700 (700-2)	700 (700-2 1/4)