

WAAS CH 82199 W23A	APP CRS 233°	Rwy Idg TDZE Apt Elev	6007 700 700
--	------------------------	-----------------------------	---

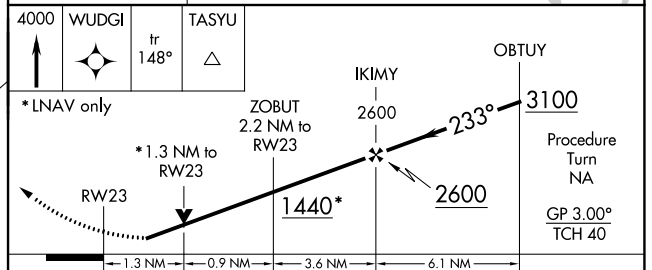
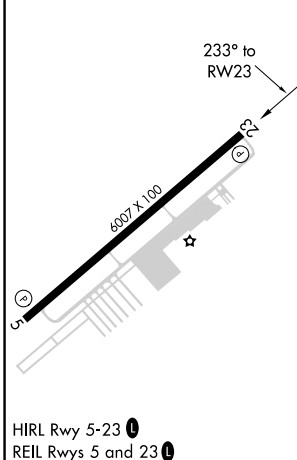
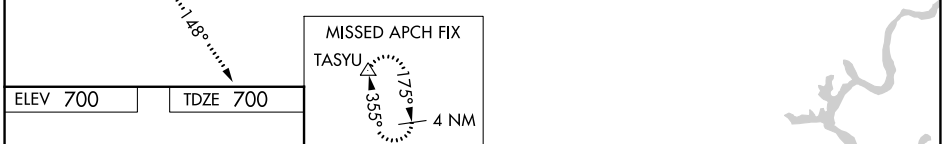
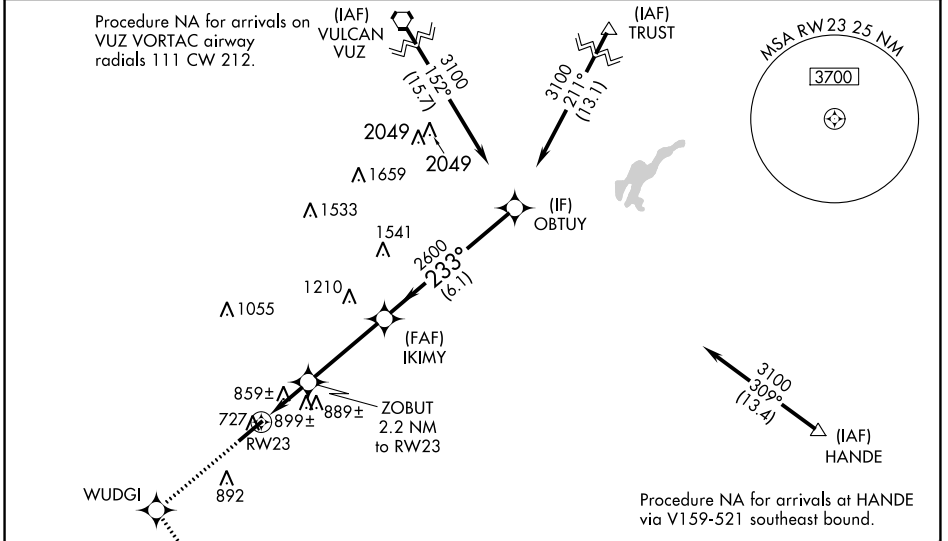
RNAV (GPS) RWY 23

BESSEMER (E K Y)

NA For uncompensated Baro-VNAV systems, LNAV/VNAV NA below -16°C (4°F) or above 54°C (130°F). DME/DME RNP-0.3 NA. Helicopter visibility reduction below ¼ SM NA. When local altimeter setting not received, use Alabaster altimeter setting and increase LPV DA to 1013 feet, LNAV/VNAV DA to 1211 feet, and all MDAs 60 feet; increase Circling Cat D visibility ¼ SM. Baro-VNAV and VDP NA when using Alabaster altimeter setting.

MISSED APPROACH: Climb to 4000 direct WUDGI and on track 148° to TASYU and hold, continue climb-in-hold to 4000.

AWOS-3PT 118.825	BIRMINGHAM APP CON 124.9 351.85	CLNC DEL 123.75	UNICOM 123.0 (CTAF)
----------------------------	---	---------------------------	-------------------------------



CATEGORY	A	B	C	D
LPV DA	972-1 272 (300-1)			
LNAV/DA VNAV	1170-1¾ 470 (500-1¾)			
LNAV MDA	1160-1	460 (500-1)	1160-1⅜ 460 (500-1⅜)	1160-1½ 460 (500-1½)
CIRCLING	1200-1	500 (500-1)	1220-1½ 520 (600-1½)	1320-2 620 (700-2)

SE-4, 31 OCT 2024 to 28 NOV 2024

SE-4, 31 OCT 2024 to 28 NOV 2024