

APP CRS	Rwy Idg	<b>3397</b>
<b>250°</b>	TDZE	<b>70</b>
	Apt Elev	<b>70</b>

# RNAV (GPS) RWY 25

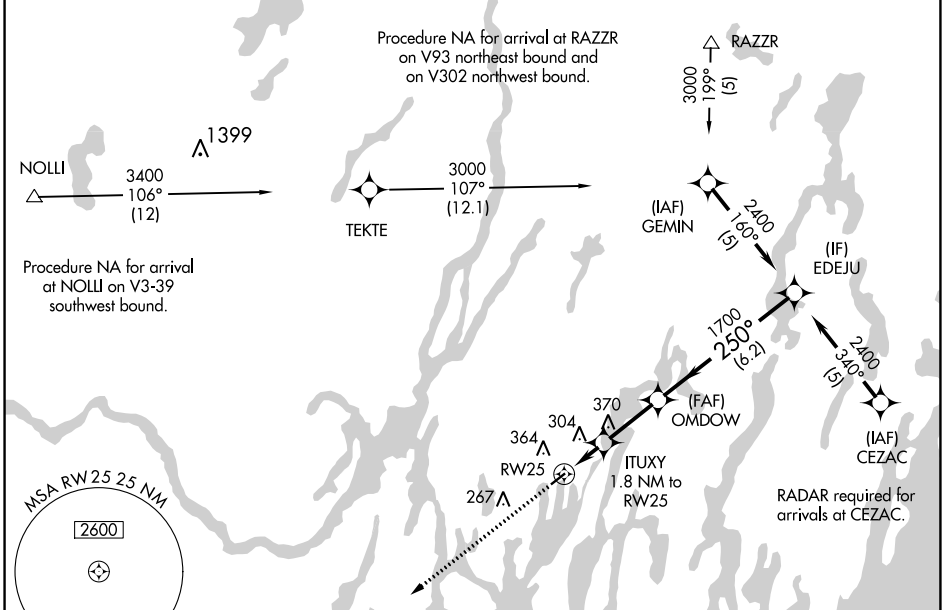
WISCASSET (IWI)

RNP APCH.

**Procedure NA at night. Rwy 25 helicopter visibility reduction below 1 SM NA. When local altimeter setting not received use Rockland altimeter setting and increase all MDA 80 feet.**

**MISSED APPROACH:** Climb to 3000 direct BAZQE and hold.

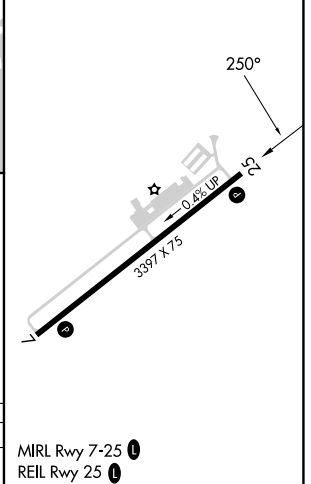
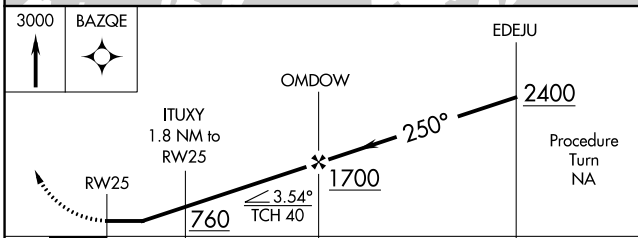
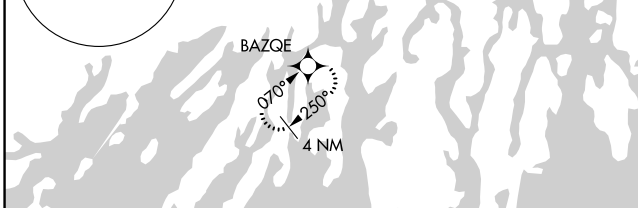
ASOS <b>135.725</b>	PORTLAND APP CON★ <b>119.75 269.35</b> (112°-292°) <b>120.4 299.2</b> (293°-111°)	UNICOM <b>122.8</b> (CTAF) <b>0</b>
------------------------	---	--



NE-1, 31 OCT 2024 to 28 NOV 2024

NE-1, 31 OCT 2024 to 28 NOV 2024

ELEV 70	TDZE 67
---------	---------



CATEGORY	A	B	C	D
LNVA MDA	580-1	513 (600-1)	NA	

MIRA Rwy 7-25 **0**  
REIL Rwy 25 **0**