

APP CRS	Rwy Idg	5007
181°	TDZE	314
	Apt Elev	319

RNAV (GPS) RWY 18

RALPH C WEISER FLD (AGO)

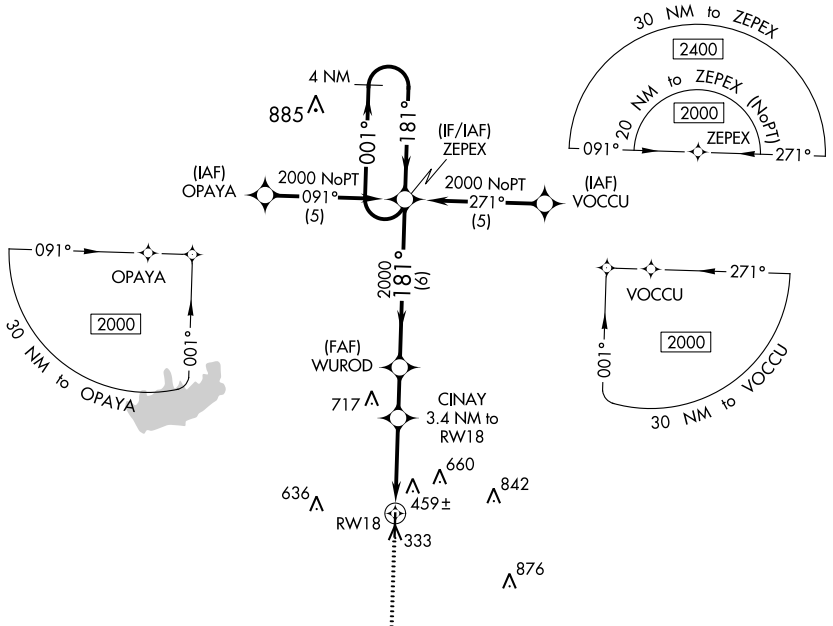
RNP APCH - GPS.

▼ When local altimeter setting not received, use El Dorado altimeter setting and increase all MDAs 60 feet. VDP NA with El Dorado altimeter setting. Rwy 18 helicopter visibility reduction below ¾ SM NA.

▲ NA

MISSED APPROACH: Climb to 2000 direct REPAE and hold.

AWOS-3 118.05	FORT WORTH CENTER 128.2 269.1	UNICOM 122.8 (CTAF) 0
-------------------------	---	---------------------------------

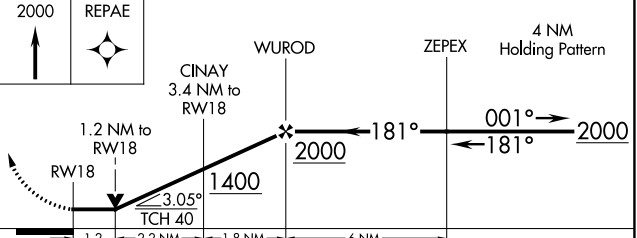


SC-1, 31 OCT 2024 to 28 NOV 2024

SC-1, 31 OCT 2024 to 28 NOV 2024

ELEV 319	TDZE 314
181° to RW18	81
0.4% UP	(4)
5007 X 100	
36	

MIRL Rwy 18-36 (P)
REIL Rwy 18 and 36 (P)



CATEGORY	A	B	C	D
LNAV MDA	980-1	666 (700-1)	980-1 7/8 666 (700-1 7/8)	NA
CIRCLING	980-1	661 (700-1)	980-1 7/8 661 (700-1 7/8)	NA