

APP CRS	Rwy Idg	3900
269°	TDZE	691
	Apt Elev	691

RNAV (GPS) RWY 27

LITCHFIELD MUNI (3L.F)

RNP APCH - GPS.

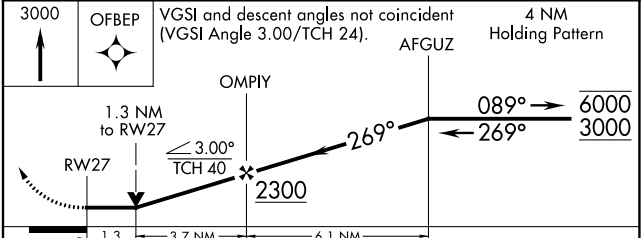
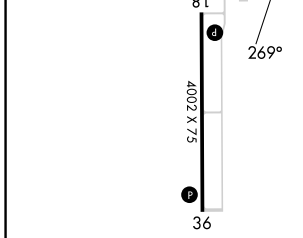
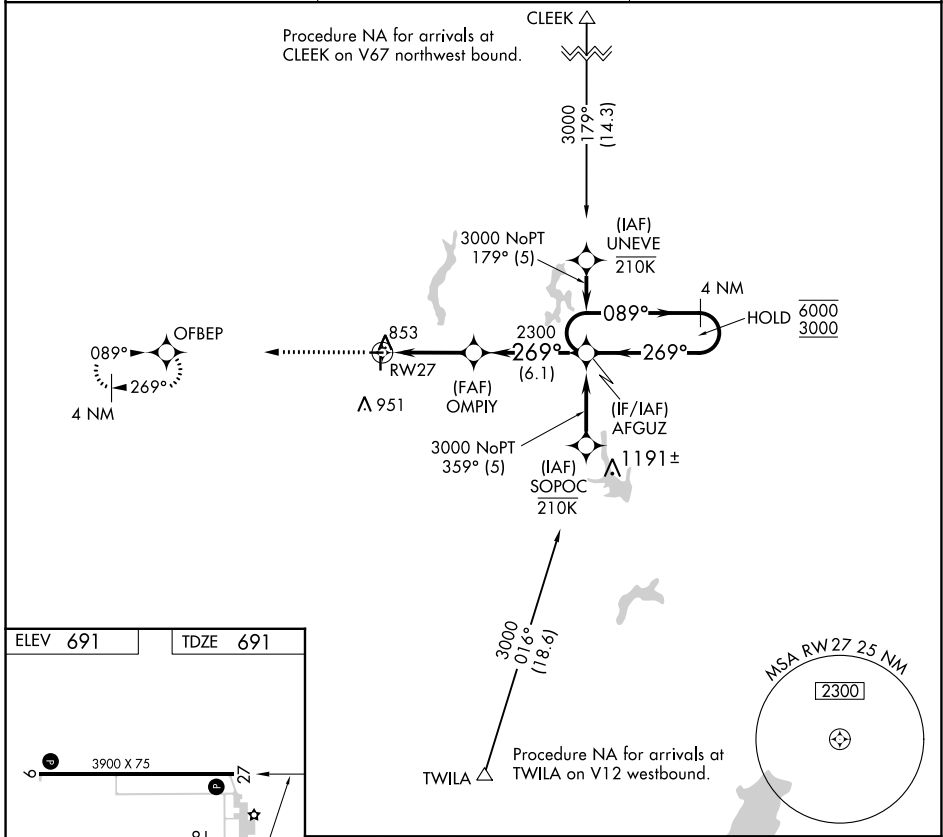
⚠ Rwy 27 helicopter visibility reduction below 3/4 SM NA. When local altimeter setting not received, use Taylorville altimeter setting and increase all MDA 80 feet and LNAV Cat C visibility 1/8 SM. VDP NA when using Taylorville altimeter setting.

MISSED APPROACH: Climb to 3000 direct OFBEP and hold.

AWOS-3PT
118.175

ST. LOUIS APP CON
124.2 353.9

UNICOM
122.8 (CTAF) 0



MIRL Rwy 9-27 and 18-36 **0**

REIL Rwy 9, 18, 27 and 36 **0**

CATEGORY	A	B	C	D
LNAV MDA	1120-1	429 (500-1)	1120-1 1/4 429 (500-1 1/4)	NA

EC-3, 31 OCT 2024 to 28 NOV 2024

EC-3, 31 OCT 2024 to 28 NOV 2024