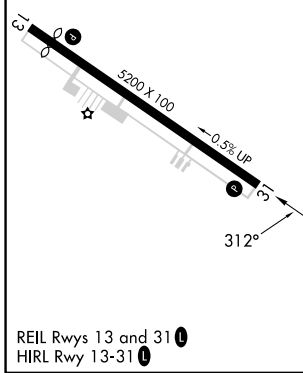
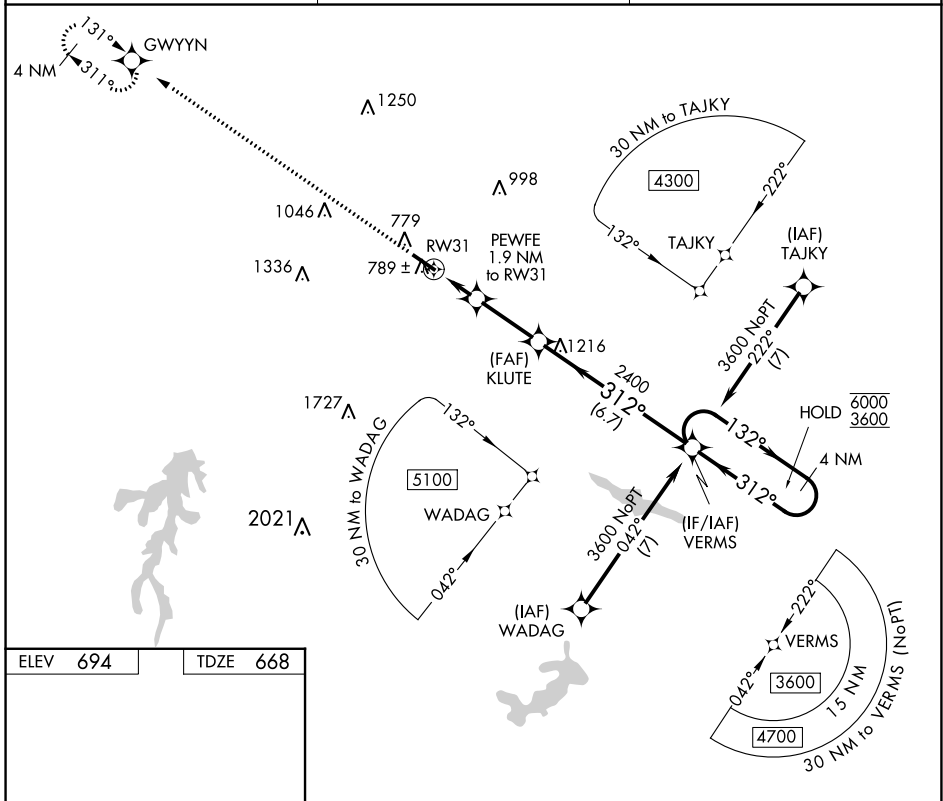


APP CRS <b>312°</b>	Rwy Idg <b>5200</b>
	TDZE <b>668</b>
	Apt Elev <b>694</b>

# RNAV (GPS) RWY 31

ROCKINGHAM COUNTY NC SHILOH (SIF')

RNP APCH - GPS.		MISSED APPROACH: Climb to 3500 direct GWYYN and hold.
▼ VDP NA when using GSO altimeter setting. ▲ Rwy 31 helicopter visibility reduction below ¾ SM NA.		
AWOS-3 <b>119.775</b>	GREENSBORO APP CON <b>124.35 269.225</b>	UNICOM <b>122.8 (CTAF)</b>



3500	GWYYN	VERMS	4 NM Holding Pattern
0.9 NM	1 NM	2.7 NM	6.7 NM
1400	2400	312°	132° → 6000 ← 312° 3600
0.9 NM to RW31	1.9 NM to RW31	3.50° TCH 40	
PEWFE	KLUTE	VERMS	
1080-1	412 (400-1)	1080-1½	412 (400-1½)
1280-1	1340-1	1360-1¾	1440-2½
586 (600-1)	646 (700-1)	666 (700-1¾)	746 (800-2½)

SE-2, 31 OCT 2024 to 28 NOV 2024

SE-2, 31 OCT 2024 to 28 NOV 2024