

WAAS CH <b>40306</b> <b>W36A</b>	APP CRS <b>004°</b>	Rwy Idg <b>5002</b> TDZE <b>829</b> Apt Elev <b>842</b>
--	------------------------	---

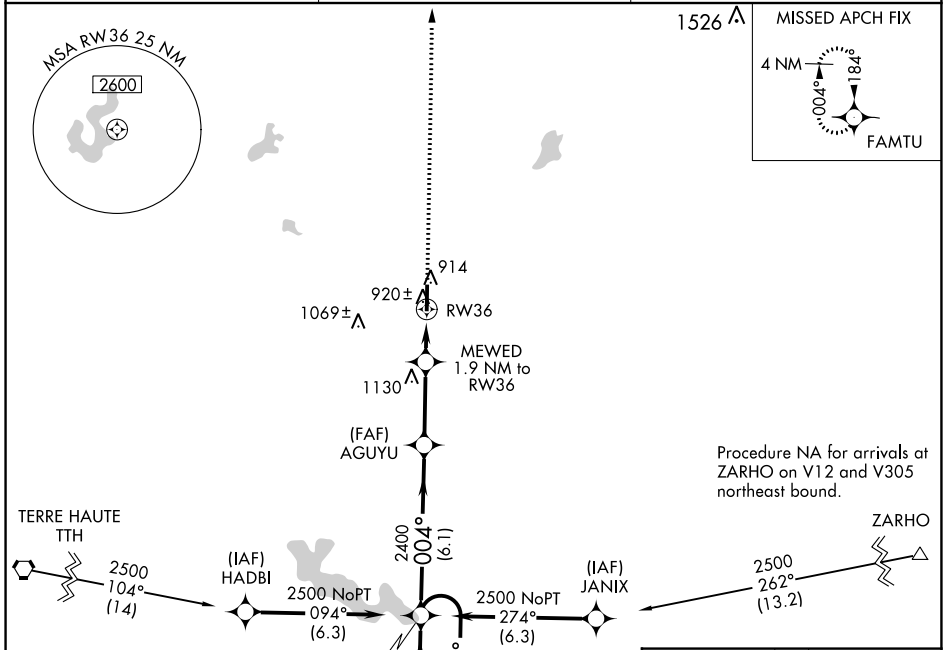
# RNAV (GPS) RWY 36

PUTNAM COUNTY RGNL (GPC)

▼ For uncompensated Baro-VNAV systems, LNAV/VNAV NA below -16°C (4°F) or above 54°C (130°F). DME/DME RNP-0.3 NA.

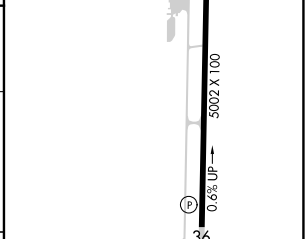
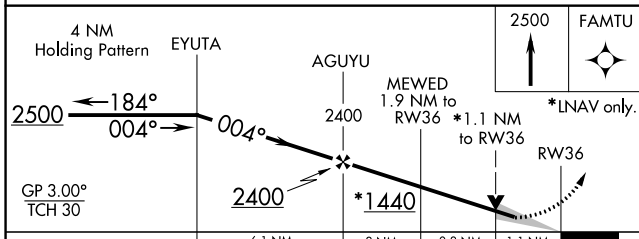
MISSED APPROACH: Climb to 2500 direct FAMTU and hold.

AWOS-3PT <b>118.125</b>	INDIANAPOLIS APP CON <b>119.05 317.8</b>	UNICOM <b>122.8 (CTAF)</b>
----------------------------	---	-------------------------------



Procedure NA for arrival on TTH VORTAC airway radials 062 CW 189.

ELEV 842	TDZE 829
----------	----------



CATEGORY	A	B	C	D
LPV DA		1079-7/8	250 (300-7/8)	
LNAV/VNAV DA		1116-1	287 (300-1)	
LNAV MDA		1180-1	351 (400-1)	
CIRCLING	1280-1 438 (500-1)	1400-1 558 (600-1)	1480-1 3/4 638 (700-1 3/4)	1480-2 638 (700-2)

MIRL Rwy 18-36  
REIL Rwy 18

EC-2, 31 OCT 2024 to 28 NOV 2024

EC-2, 31 OCT 2024 to 28 NOV 2024