

RNAV (GPS) RWY 18

APCH CRS	Rwy Idg	6142
161°	TDZE	410
	Arprt Elev	433

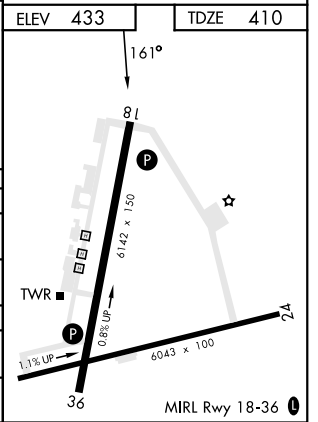
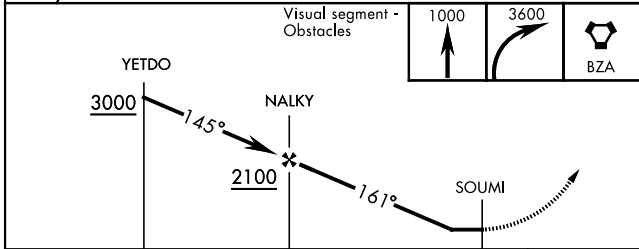
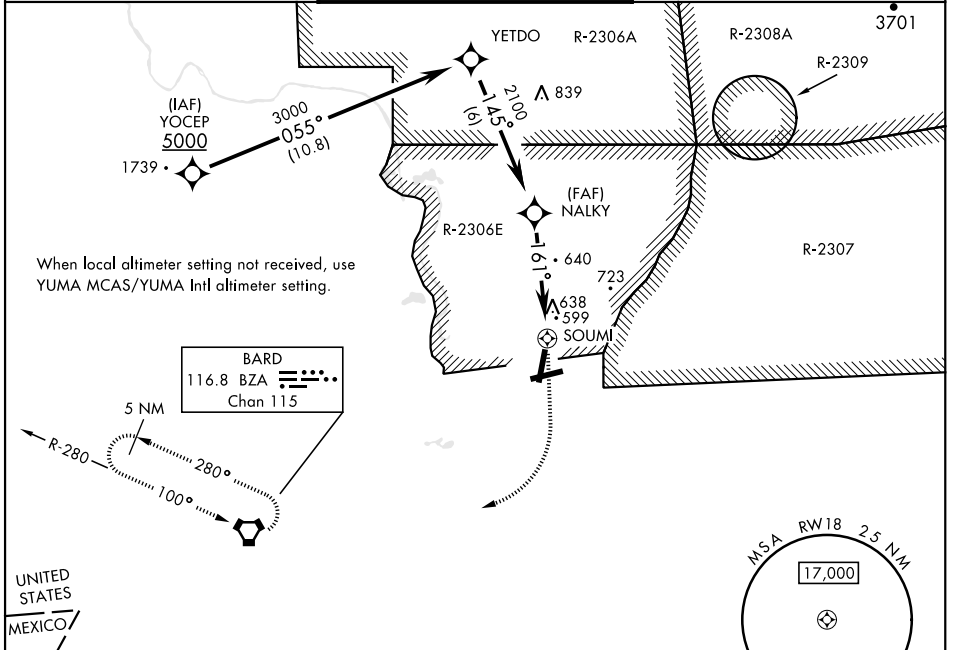
AL-6341 [USA]

LAGUNA AAF (KLGf)

RNP APCH - GPS
RADAR required for holding.
 Procedure NA when airfield closed.
 *Circling to Rwy 24 not authorized at night.
 NA Circling not authorized NW of Rwy 6 and 18.

MISSED APPROACH: Climb to 1000, then climbing right turn to 3600 direct BZA VORTAC and hold, continue climbing in hold to 3600.

YUMA APP CON 124.7 371.975	TOWER ★ 126.2 (CTAF) 242.175	GND CON 121.8 229.4
--------------------------------------	--	-------------------------------



CATEGORY	A	B	C	D
LNVA MDA	900-1	490 (500-1)	900-1 $\frac{3}{8}$	490 (500-1 $\frac{5}{8}$)
CIRCLING *	900-1 467 (500-1)	940-1 507 (600-1)	940-1 $\frac{1}{2}$ 507 (600-1 $\frac{1}{2}$)	1040-2 607 (700-2)
YUMA MCAS/YUMA Intl ALTIMETER SETTING				
LNVA MDA	980-1	570 (600-1)	980-1 $\frac{5}{8}$	570 (600-1 $\frac{5}{8}$)
CIRCLING *	980-1 547 (600-1)	1020-1 587 (600-1)	1020-1 $\frac{5}{8}$ 587 (600-1 $\frac{5}{8}$)	1120-2 $\frac{1}{4}$ 687 (700-2 $\frac{1}{4}$)

RNAV (GPS) RWY 18

SW-4, 31 OCT 2024 to 28 NOV 2024

SW-4, 31 OCT 2024 to 28 NOV 2024