

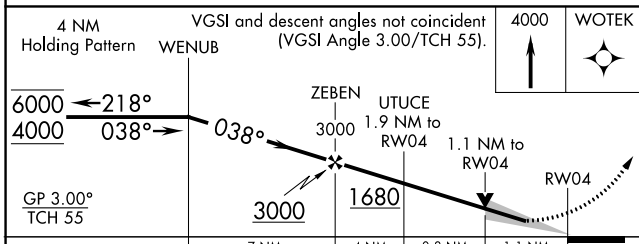
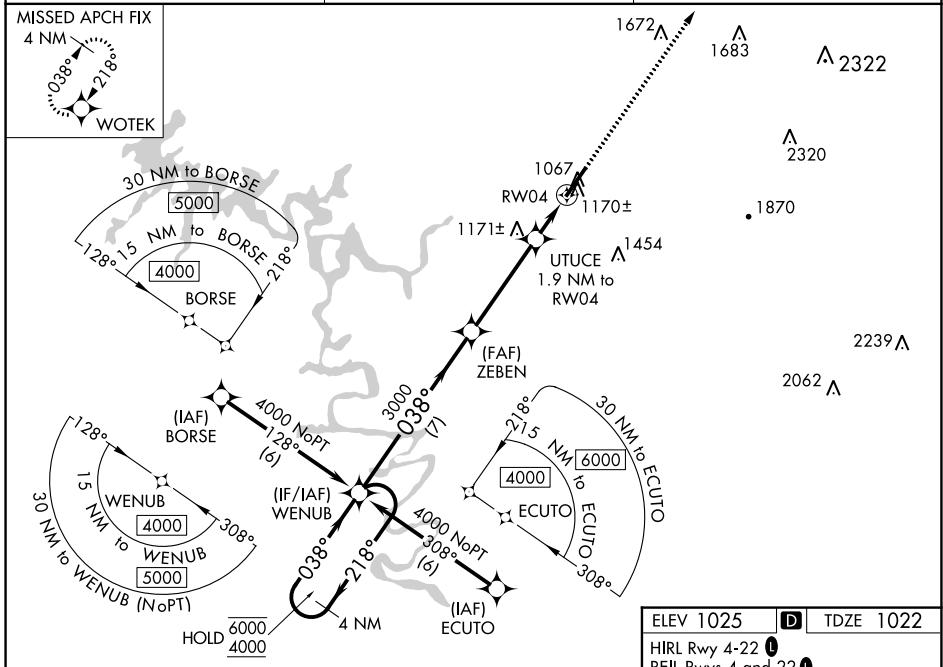
WAAS CH <b>82210</b> <b>W04A</b>	APP CRS <b>038°</b>	Rwy Idg TDZE Apt Elev	<b>6000</b> <b>1022</b> <b>1025</b>
--	------------------------	-----------------------------	---

# RNAV (GPS) RWY 4

UPPER CUMBERLAND RGNL (SR.B)

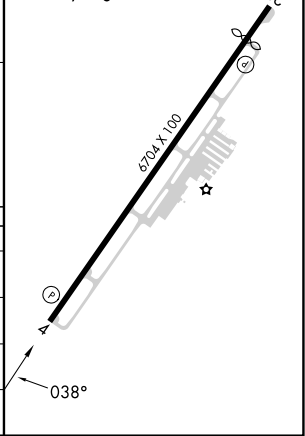
RNP APCH - GPS.		MISSED APPROACH: Climb 4000 direct WOTEK and hold.
<p><b>⚠</b> For uncompensated Baro-VNAV systems, LNAV/VNAV NA below -17°C or above 54°C.</p>		

AWOS-3P <b>128.25</b>	MEMPHIS CENTER <b>132.9 290.3</b>	UNICOM <b>122.975 (CTAF) 0</b>
--------------------------	--------------------------------------	-----------------------------------



ELEV 1025	<b>D</b>	TDZE 1022
-----------	----------	-----------

HIRL Rwy 4-22 **0**  
 REIL Rwy 4 and 22 **0**  
 RLLS Rwy 4 **0**



CATEGORY	A	B	C	D
LPV DA		1238-3/4	216 (300-3/4)	
LNAV/VNAV DA		1396-1	374 (400-1)	
LNAV MDA	1420-1	398 (400-1)	1420-1 1/8	398 (400-1 1/8)
<b>C</b> CIRCLING	1480-1	455 (500-1)	1600-1 1/2 575 (600-1 1/2)	1880-2 3/4 855 (900-2 3/4)

SE-1, 31 OCT 2024 to 28 NOV 2024

SE-1, 31 OCT 2024 to 28 NOV 2024