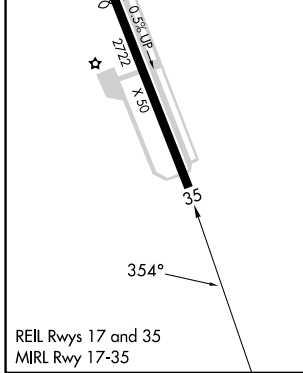
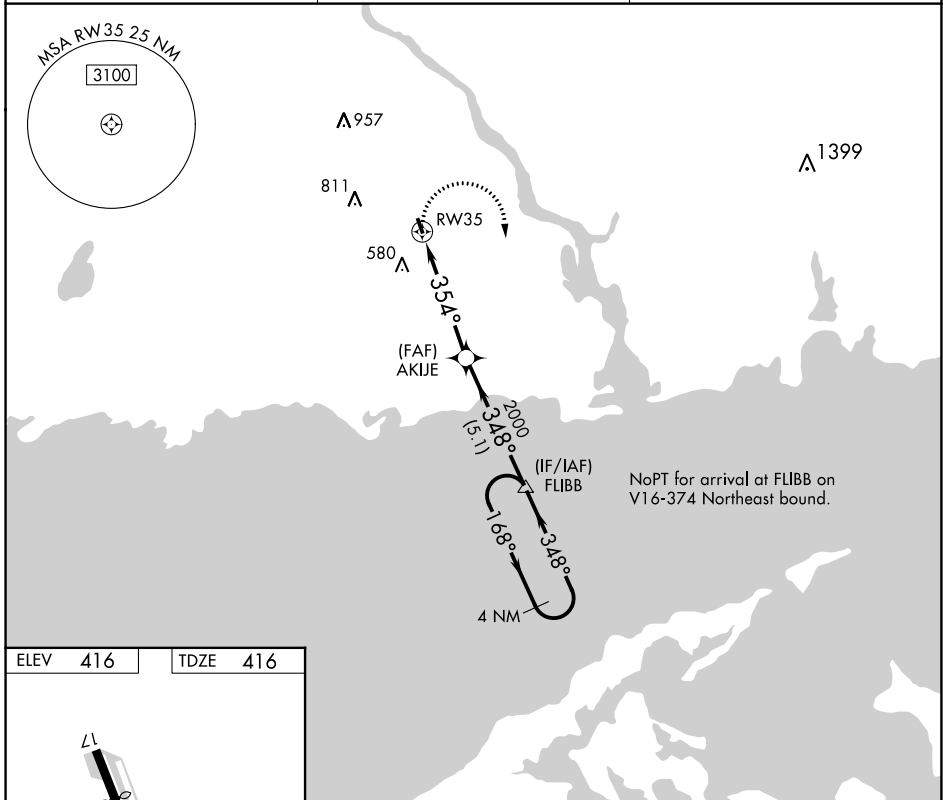


APP CRS <b>354°</b>	Rwy Idg <b>2722</b>
	TDZE <b>416</b>
	Apt Elev <b>416</b>

# RNAV (GPS) RWY 35

CHESTER (SNC)

<p><b>⚠</b> DME/DME RNP-0.3 NA. Procedure NA at night. Helicopter visibility reduction below 1 SM NA. When local altimeter setting not received, use Meriden altimeter setting and increase all MDA 100 feet.</p>	<p>MISSED APPROACH: Climbing right turn to 2100 direct FLIBB and hold.</p>
<p>AWOS-3 <b>118.325</b></p>	<p>NEW YORK APP CON <b>124.075 343.65</b></p>
<p>UNICOM <b>122.725 (CTAF)</b></p>	



ELEV	416	TDZE	416
<p>2100 FLIBB</p>		<p>4 NM Holding Pattern</p>	
<p>RW35</p>		<p>AKIJE</p>	
<p>4.8 NM</p>		<p>5.1 NM</p>	
CATEGORY	A	B	C
LNAV MDA	820-1	404 (500-1)	NA
CIRCLING	920-1 504 (600-1)	1020-1 604 (700-1)	NA

NE-1, 31 OCT 2024 to 28 NOV 2024

NE-1, 31 OCT 2024 to 28 NOV 2024