

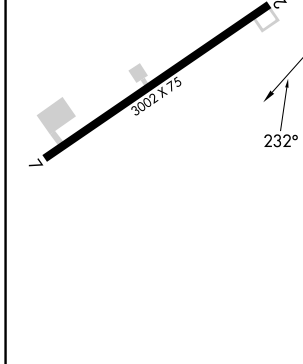
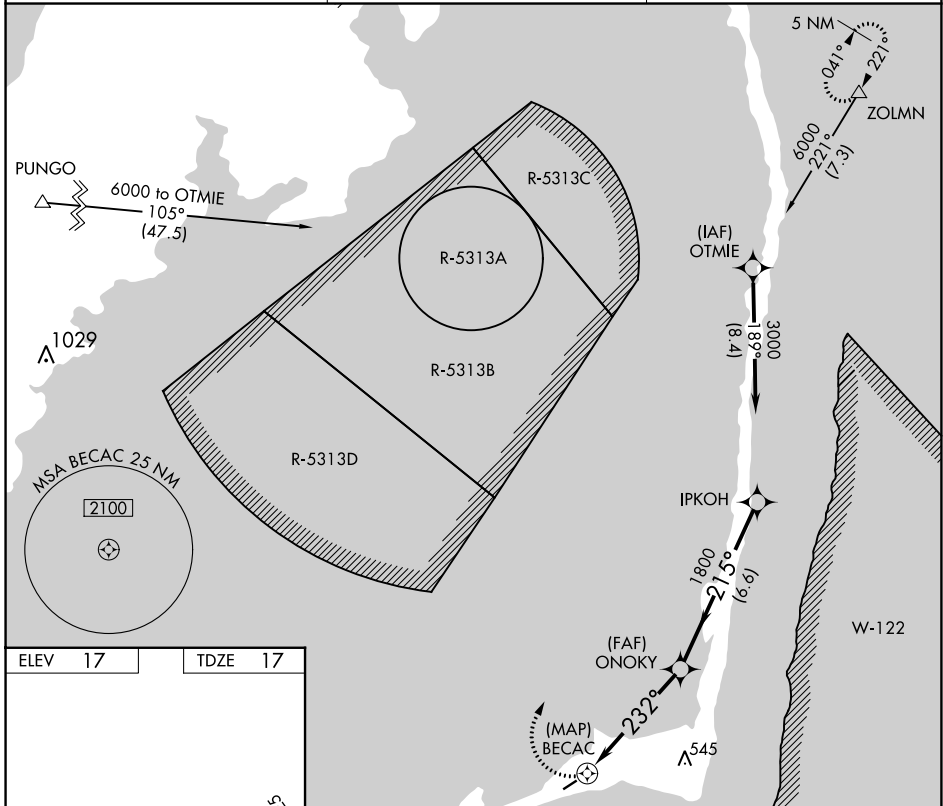
APP CRS <b>232°</b>	Rwy Idg <b>3002</b>
	TDZE <b>17</b>
	Apt Elev <b>17</b>

# RNAV (GPS) RWY 25

BILLY MITCHELL (HSE)

NA Procedure NA at night. GPS or RNP-0.3 required. DME/DME RNP-0.3 NA.	MISSED APPROACH: Climbing right turn to 6000 via course 032° to ZOLMN WP and hold.
---	---

ASOS <b>118.375</b>	CHERRY POINT APP CON <b>119.75 360.775</b>	CTAF <b>122.9</b>
------------------------	---	----------------------



	ZOLMN △ crs 032°		IPKOH 3000	
	ONOKY 1800		Procedure Turn NA	
	BECAC			
	232°		215°	
	3.00°			
	TCH 40			
	0.5		6.6 NM	
CATEGORY	A	B	C	D
LNAV MDA	520-1	503 (600-1)	520-1½ 503 (600-1½)	NA
CIRCLING	560-1	543 (600-1)	560-1½ 543 (600-1½)	NA

SE-2, 31 OCT 2024 to 28 NOV 2024

SE-2, 31 OCT 2024 to 28 NOV 2024