

WAAS CH 45837 W14A	APP CRS 143°	Rwy Idg TDZE Apt Elev	3455 1155 1157
--	------------------------	-----------------------------	---

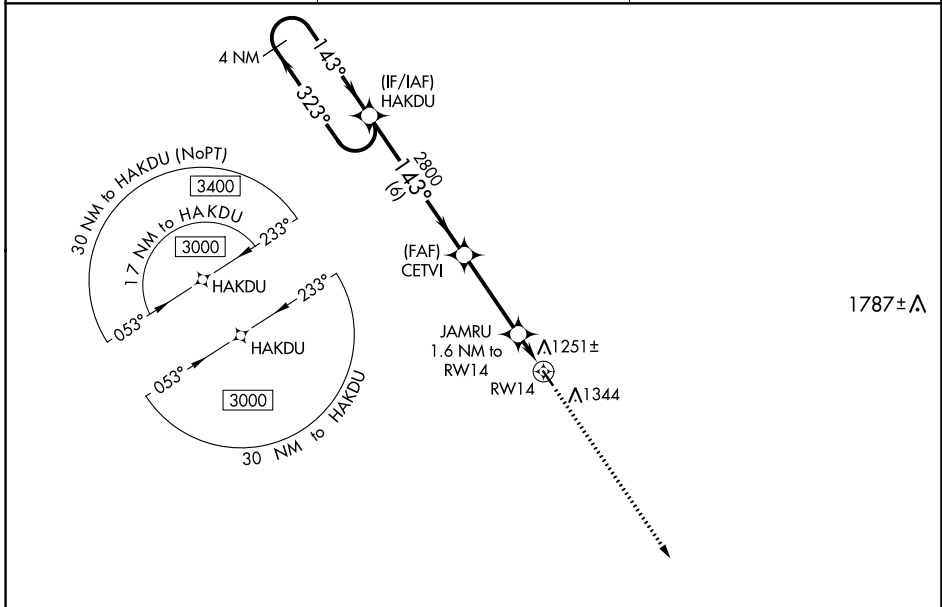
RNAV (GPS) RWY 14

CLARION MUNI (CAV)

⚠ For uncompensated Baro-VNAV systems, LNAV/VNAV NA below -17°C (2°F) or above 54°C (130°F). DME/DME RNP-0.3 NA. When local altimeter setting not received, use Fort Dodge altimeter setting and increase all DA 52 feet, all MDA 60 feet; increase LPV and LNAV/VNAV all Cats visibility 1/8 mile. Baro-VNAV and VDP NA when using Fort Dodge altimeter setting. Helicopter visibility reduction below 3/4 SM NA.

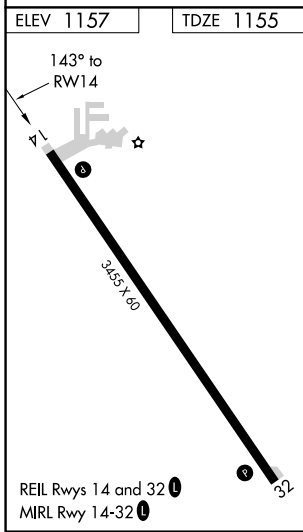
MISSED APPROACH: Climb to 3000 direct FEGNU and hold.

AWOS-3 126,575	MINNEAPOLIS CENTER 134.0 288.3	UNICOM 122.8 (CTAF) 0
--------------------------	--	---------------------------------



NC-3, 31 OCT 2024 to 28 NOV 2024

NC-3, 31 OCT 2024 to 28 NOV 2024



ELEV 1157	TDZE 1155	VGSi and RNAV glidepath not coincident (VGSi Angle 3.00/TCH 40).			
4 NM Holding Pattern	HAKDU	CETVI	JAMRU 1.6 NM to RWY 14	FEGNU	3000
3000	← 323°	143° →	2800	↑	*LNAV only
GP 3.00°		2800	*1700	*1 NM to RWY 14	RWY 14
TCH 40					
	← 6 NM	← 3.5 NM	← 0.6	← 1 NM	
CATEGORY	A	B	C	D	
LPV DA	1405-1	250 (300-1)			NA
LNAV/VNAV DA	1415-1	260 (300-1)			NA
LNAV MDA	1520-1	365 (400-1)			NA
C CIRCLING	1680-1	523 (600-1)			NA