

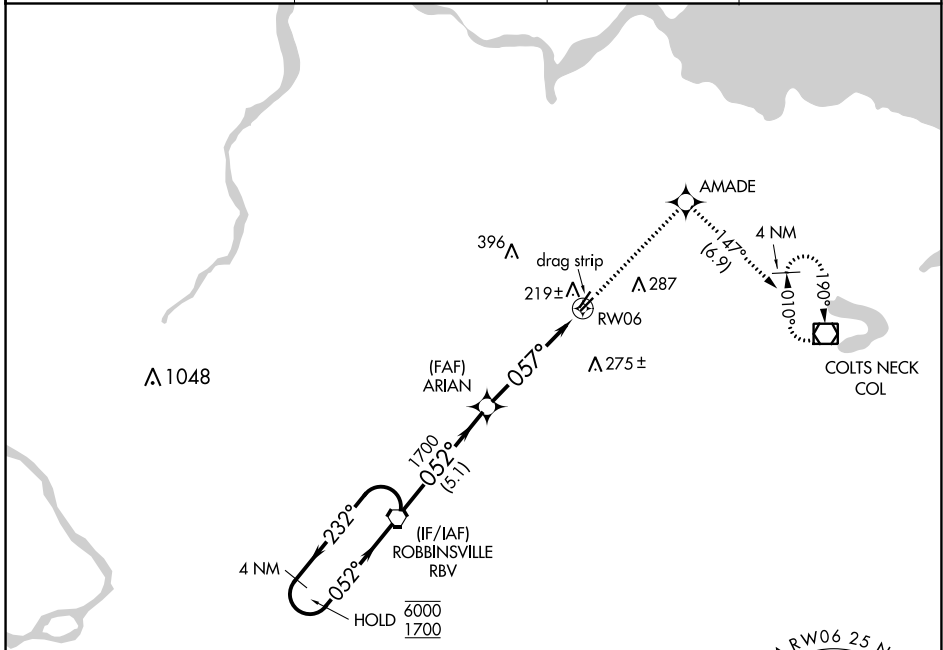
APP CRS	Rwy Idg	<b>2994</b>
<b>057°</b>	TDZE	<b>87</b>
	Apt Elev	<b>87</b>

# RNAV (GPS) RWY 6

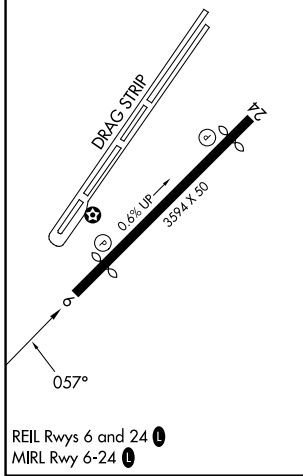
OLD BRIDGE (3N6)

RNP APCH.	Procedure NA at night. Rwy 6 helicopter visibility reduction below 1 SM NA. Use Belmar/Farmingdale altimeter setting; when not received, use Wrightstown altimeter setting and increase all MDA 20 feet.	MISSED APPROACH: Climb to 2000 direct AMADE and on track 147° to COL VOR/DME and hold.
Procedure NA at night. Use Belmar/Farmingdale altimeter setting; when not received, use Wrightstown altimeter setting and increase all MDA 20 feet.		

BLM AWOS-3PT <b>121.625</b>	MC GUIRE APP CON <b>126.475 363.8</b>	GCO <b>121.725</b>	UNICOM <b>123.075 (CTAF)</b>
--------------------------------	------------------------------------------	-----------------------	---------------------------------



ELEV <b>87</b>	TDZE <b>87</b>
----------------	----------------



REIL Rwy 6 and 24  
MIRL Rwy 6-24

NoPT for arrival on RBV VORTAC airway radials 238 CW 289.

MSA RW06 2.5 NM  
2900

Visual Segment - Obstacles.			
2000	AMADE	tr 147°	COL
4 NM Holding Pattern	RBV VORTAC	ARIAN	RW06
6000 1700	← 232° →	052° →	← 057° →
5.1 NM		4.9 NM	
CATEGORY	A	B	C D
LNAV MDA	660-1	573 (600-1)	NA

NE-2, 31 OCT 2024 to 28 NOV 2024

NE-2, 31 OCT 2024 to 28 NOV 2024