

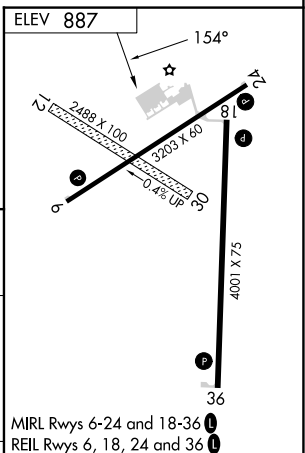
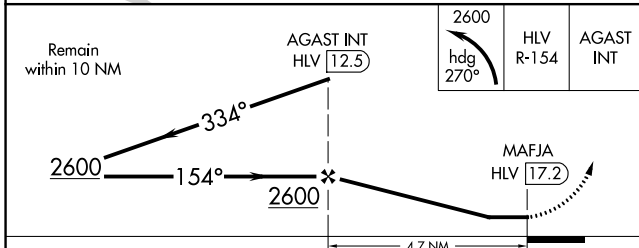
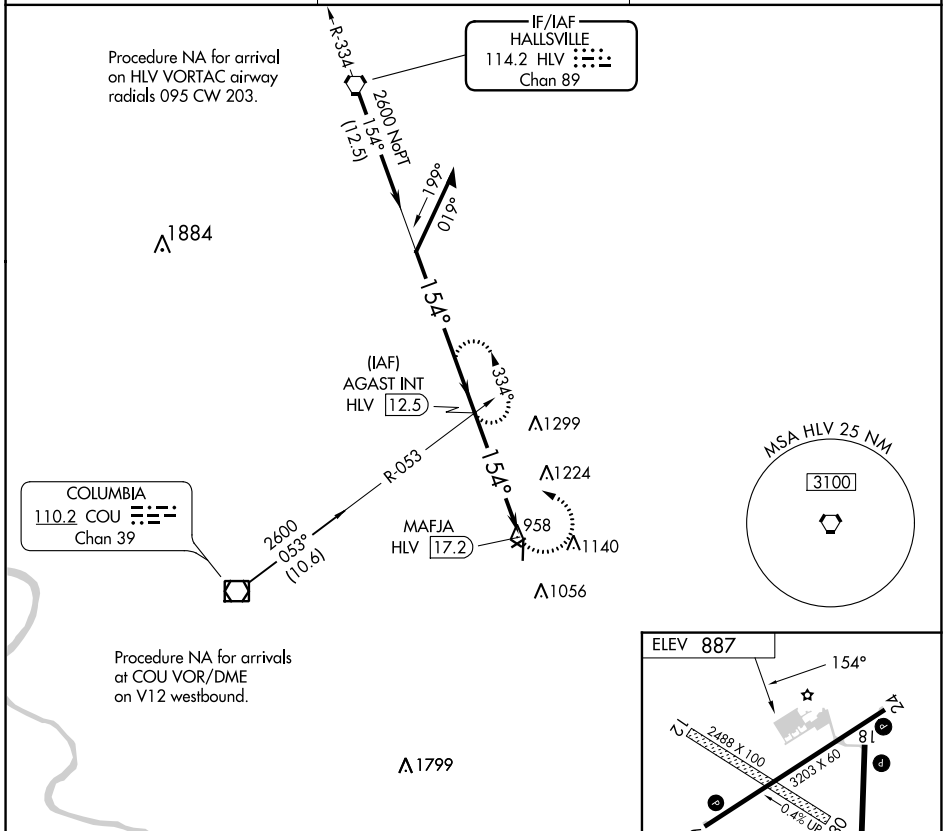
| | | |
|--|------------------------|--|
| VORTAC HLV 114.2 Chan 89 | APP CRS 154° | Rwy Idg TDZE Apt Elev N/A N/A 887 |
|--|------------------------|--|

VOR-A
ELTON HENSLEY MEML (F'TT)

NA Circling NA to Rwys 12 and 30. Circling Rwy 18, 24 NA at night. Use Columbia altimeter setting; when not received use Jefferson City altimeter setting and increase all MDA 80 feet, and Circling Cat C visibility ¼ SM.

MISSED APPROACH: Climbing left turn to 2600 on heading 270° and HLV VORTAC R-154 to AGAST INT/12.5 DME and hold.

| | | |
|---------------------------|---|-------------------------------|
| COU ASOS 128.45 | MIZZU APP CON 124,375 353,925 | UNICOM 122.7 (CTAF) |
|---------------------------|---|-------------------------------|



| | | | | | | | | | | |
|-------------------|--------|-------------|--------|----|-------------------|------|------|------|------|------|
| CATEGORY | A | B | C | D | FAF to MAP 4.7 NM | | | | | |
| | 1520-1 | 633 (700-1) | 1560-2 | NA | Knots | 60 | 90 | 120 | 150 | 180 |
| C CIRCLING | | | | | Min:Sec | 4:42 | 3:08 | 2:21 | 1:53 | 1:34 |

NC-3, 31 OCT 2024 to 28 NOV 2024

NC-3, 31 OCT 2024 to 28 NOV 2024