

WAAS CH 82714 W22A	APP CRS 217°	Rwy Idg TDZE 465 Apt Elev 468	5001
--	------------------------	---	------

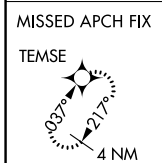
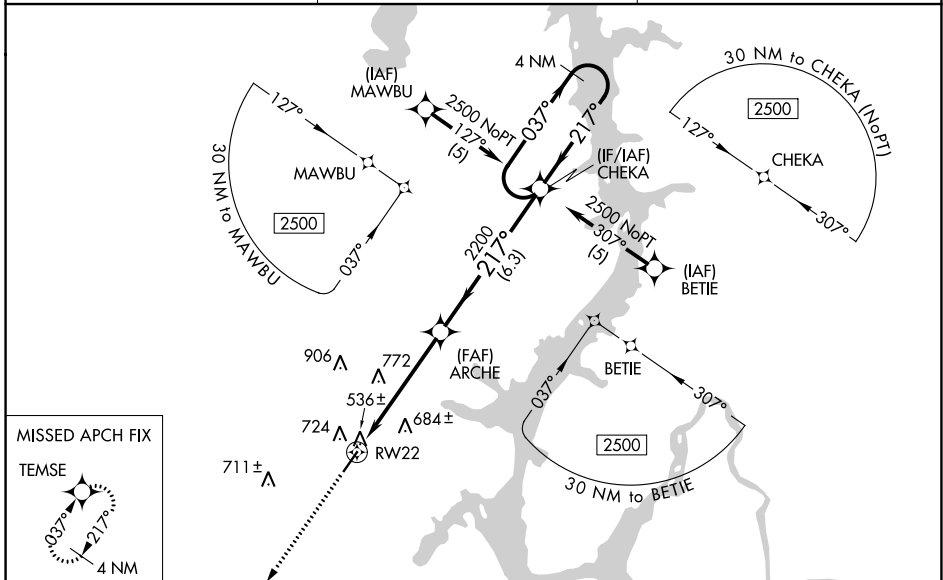
AL-6386 (FAA)

RNAV (GPS) RWY 22

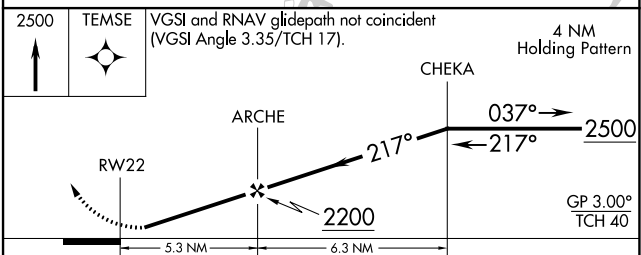
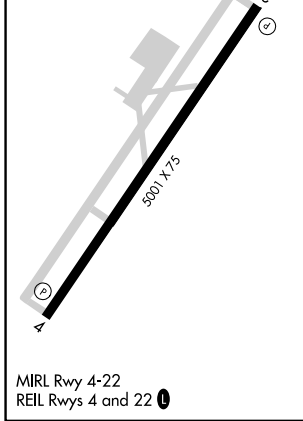
BENTON COUNTY (M4)

RNP APCH.	<p>Baro-VNAV NA. Rwy 22 helicopter visibility reduction below 1 SM NA. Use Beech River Rgnl altimeter setting; when not received, use Jackson altimeter setting and increase all DA 58 feet and all MDA 60 feet and increase LPV all Cats visibility 1/4 mile, LNAV/VNAV all Cats visibility 1/4 mile, and LNAV Cat C visibility 1/4 mile. Procedure NA at night.</p>	MISSED APPROACH: Climb to 2500 direct TEMSE and hold.
-----------	--	---

PVE AWOS-3 118.125	MEMPHIS CENTER 125.85 379.25	UNICOM 122.8 (CTAF)
------------------------------	--	-------------------------------



ELEV 468	TDZE 465
----------	----------



CATEGORY	A	B	C	D
LPV DA	833-1 1/4	368 (400-1 1/4)		NA
LNAV/VNAV DA	980-1 3/4	515 (600-1 3/4)		NA
LNAV MDA	1080-1	615 (700-1)	1080-1 3/4 615 (700-1 3/4)	NA

SE-1, 31 OCT 2024 to 28 NOV 2024

SE-1, 31 OCT 2024 to 28 NOV 2024