

APP CRS	Rwy Idg	N/A
251°	TDZE	N/A
	Apt Elev	6547

RNAV (GPS)-D

EAGLE COUNTY RGNL (EGE)

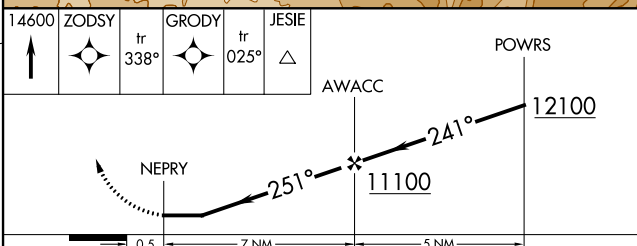
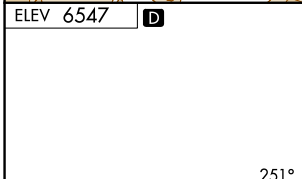
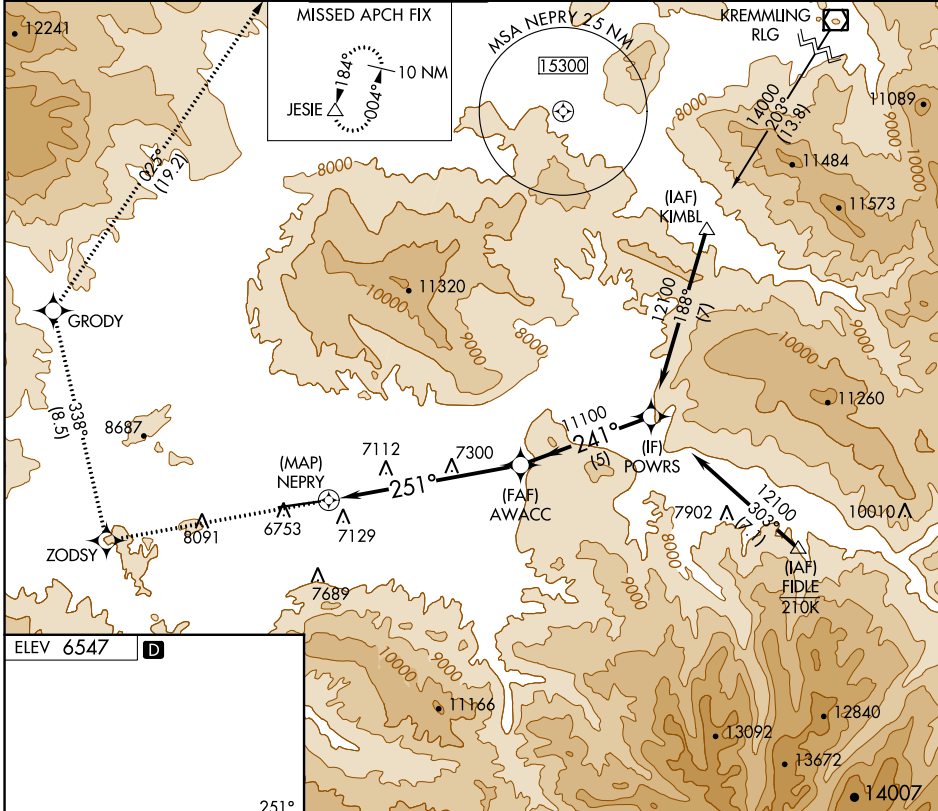
RNP APCH.

⚠ Circling to Rwy 7 NA at night. Circling NA for Cats C and D south of Rwy 7-25. Rwy 7 helicopter visibility reduction below 1 SM NA. Rwy 25 helicopter visibility reduction below ¾ SM NA. Inoperative table does not apply.

❄ -20°C

MISSED APPROACH: (Do not exceed 185K until GRODY) Climb to 14600 direct ZODSY then on track 338° to GRODY and on track 025° to JESIE and hold, continue climb in-hold to 14600.

ATIS 135.575	DENVER CENTER 128.65 282.2	EAGLE TOWER * 119.8 (CTAF)	GND CON 121.8	CLNC DEL 124.75	DENVER CLNC DEL 124.75 (When tower closed)
------------------------	--------------------------------------	--------------------------------------	-------------------------	---------------------------	---



CATEGORY	A	B	C	D
C CIRCLING	9220-1¼ 2673 (2700-1¼)	9220-1½ 2673 (2700-1½)	9220-3	2673 (2700-3)

SW-1, 31 OCT 2024 to 28 NOV 2024

SW-1, 31 OCT 2024 to 28 NOV 2024