

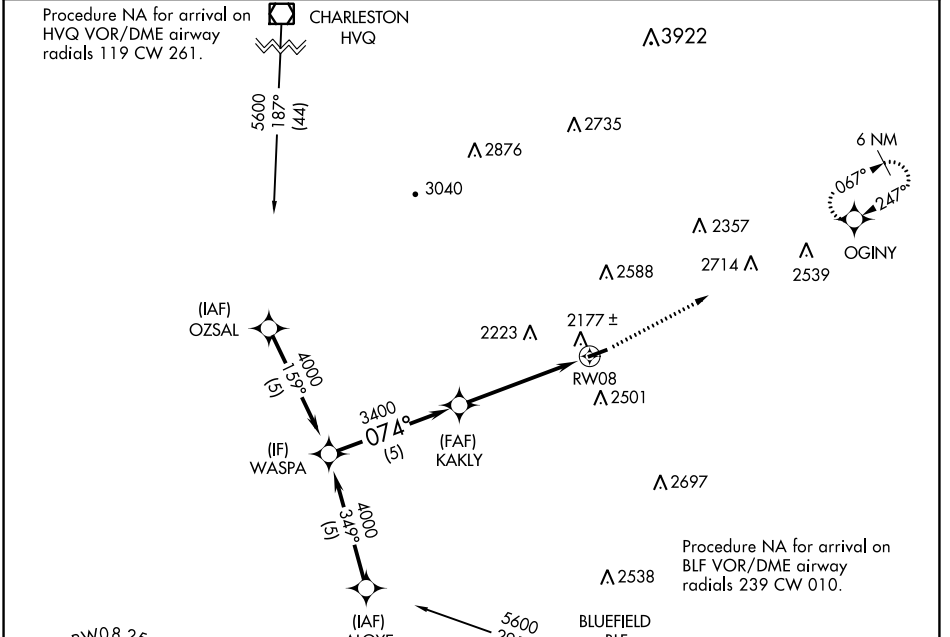
APP CRS	Rwy Idg	<b>3701</b>
<b>074°</b>	TDZE	<b>1770</b>
	Apt Elev	<b>1783</b>

# RNAV (GPS) RWY 8

KEE FLD (I16)

RNP APCH - GPS.	MISSED APPROACH: Climb to 5000 direct OGINY and hold.
<p>▼ Rwy 8 helicopter visibility reduction below 1 SM NA.</p> <p>▲ NA Procedure NA at night.</p>	

AWOS-3 <b>120.625</b>	CHARLESTON APP CON <b>125.4 269.125</b>	UNICOM <b>122.8 (CTAF) 0</b>
--------------------------	--	---------------------------------



ELEV 1783	TDZE 1770
-----------	-----------



CATEGORY	A	B	C	D
LNNAV MDA	2460-1	690 (700-1)	2460-2	NA
			690 (700-2)	

MIRL Rwy 8-26 0
REIL Rwy 8 and 26 0

NE-4, 31 OCT 2024 to 28 NOV 2024

NE-4, 31 OCT 2024 to 28 NOV 2024