

FORT INDIANTOWN GAP, PENNSYLVANIA

# RNAV (GPS)-B

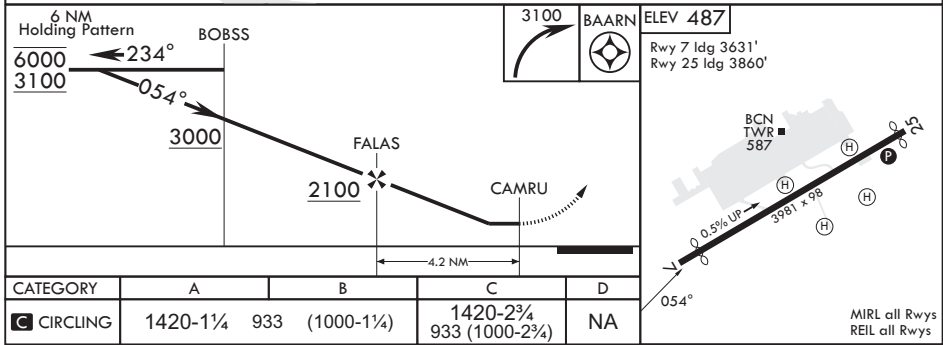
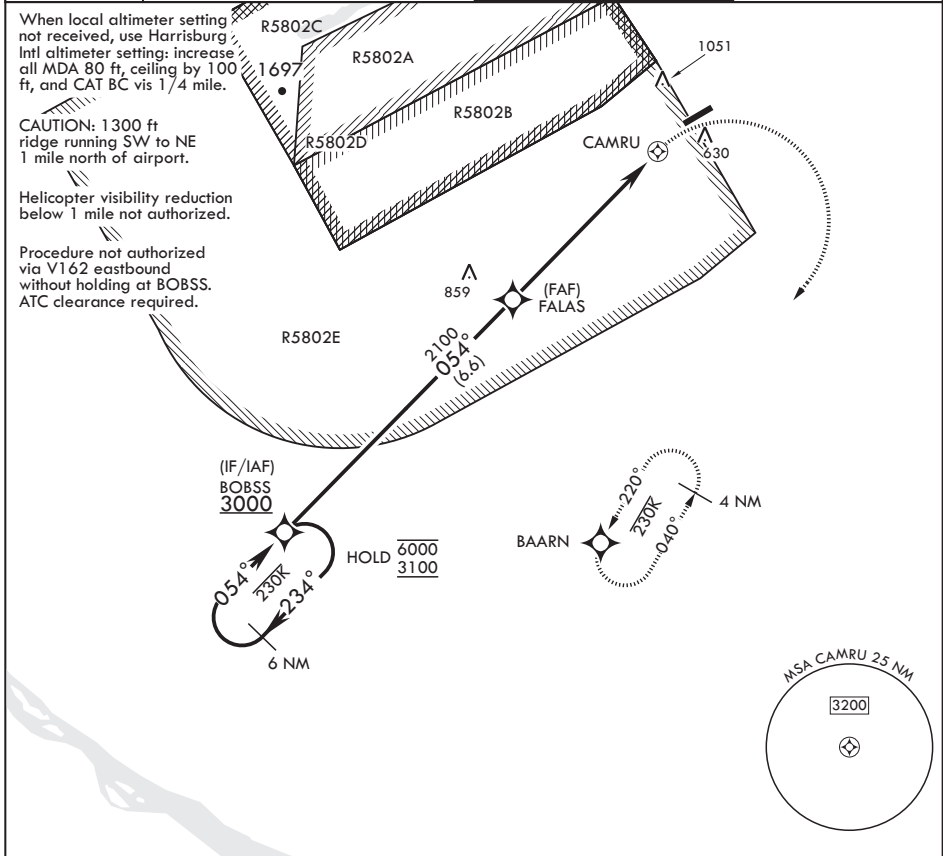
APCH CRS <b>054°</b>	Rwy ldg TDZE Arprt Elev	N/A N/A <b>487</b>
-------------------------	----------------------------	--------------------------

AL-6422 (USA)

MUIR AHP (KMUI)

RNP APCH - GPS	MISSED APPROACH: Climbing right turn to 3100 direct BAARN and hold.
----------------	---

ASOS <b>124.175</b>	HARRISBURG APP CON/DEP CON <b>118.25 269.45</b>	TOWER ★ <b>126.2 (CTAF) 0 290.325</b>	GND CON <b>135.675 269.525</b>
------------------------	--	--	-----------------------------------



CATEGORY	A	B	C	D
<b>C</b> CIRCLING	1420-1¼ 933	(1000-1¼)	1420-2¾ 933 (1000-2¾)	NA

MIRL all Rwys  
REIL all Rwys

FORT INDIANTOWN GAP, PENNSYLVANIA

40°26'N - 76°34'W

MUIR AHP (KMUI)

Amdt 3 10AUG23

# RNAV (GPS)-B

NE-4, 31 OCT 2024 to 28 NOV 2024

NE-4, 31 OCT 2024 to 28 NOV 2024