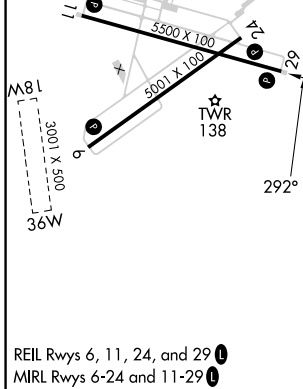
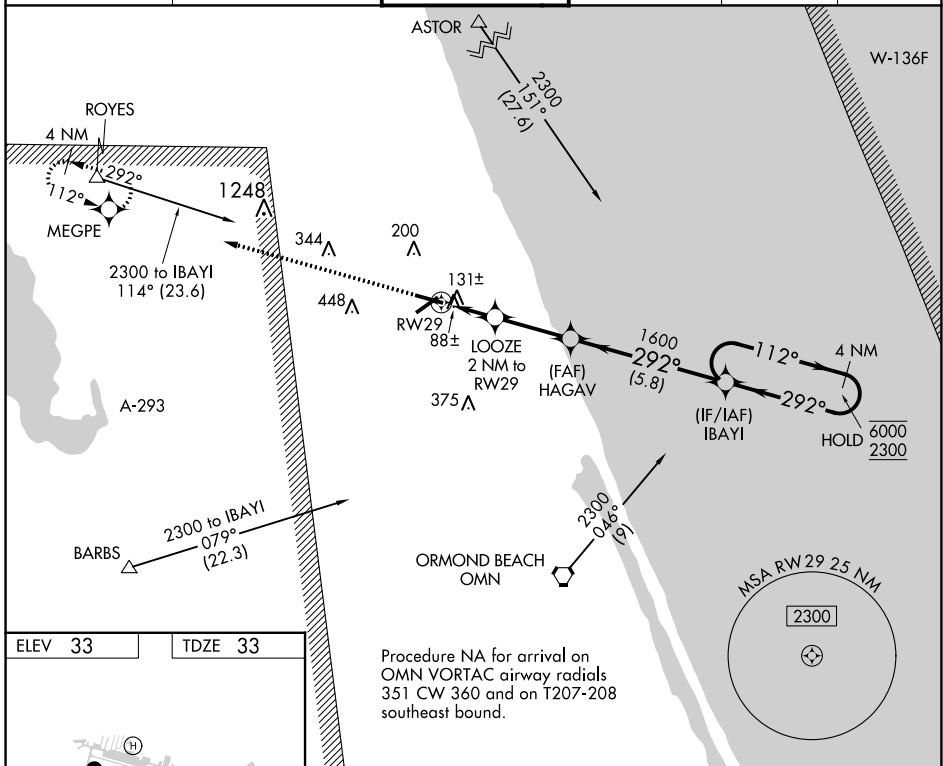


WAAS CH <b>56243</b> <b>W29A</b>	APP CRS <b>292°</b>	Rwy Idg TDZE <b>33</b> Apt Elev <b>33</b>	<b>5500</b>
--	------------------------	---	-------------

# RNAV (GPS) RWY 29

FLAGLER EXEC (FIN)

RNP APCH.		MISSED APPROACH: Climb to 2300 direct MEGPE and hold.				
<p>⚠ Circling NA to Rwy 18W and 36W. Rwy 29 helicopter visibility reduction below 3/4 SM NA.</p>		<p>FLAGLER TOWER ★ <b>118.95</b> (CTAF) <b>0</b></p>		GND CON <b>121.75</b>	CLNC DEL <b>121.75</b>	UNICOM <b>123.0</b>
ATIS <b>128.325</b>	DAYTONA APP CON <b>125.8 269.075</b>					



ELEV 33	TDZE 33	<p>2300 MEGPE</p> <p>LOOZE 2 NM to RW29</p> <p>HAGAV</p> <p>IBAWI 4 NM Holding Pattern</p> <p>112° → 6000</p> <p>← 292° ← 2300</p> <p>700</p> <p>1600</p> <p>3.00° TCH 40</p> <p>1 NM 1 NM 2.8 NM 5.8 NM</p>			
CATEGORY	A	B	C	D	
LP MDA	400-1 367 (400-1)				
LNAV MDA	440-1	407 (500-1)	440-1½	407 (500-1½)	
<b>C</b> CIRCLING	500-1	467 (500-1)	760-2	760-2¼	
			727 (800-2)	727 (800-2¼)	

SE-3, 31 OCT 2024 to 28 NOV 2024

SE-3, 31 OCT 2024 to 28 NOV 2024