


WAAS CH 56310 W25A	APP CRS 252°	Rwy Idg 6005 TDZE 860 Apt Elev 862
--	------------------------	---

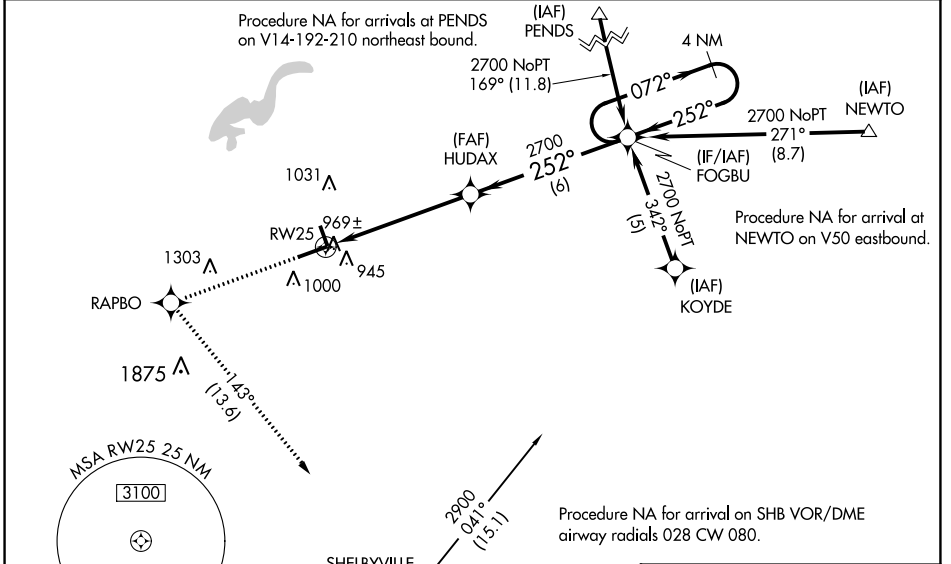
RNAV (GPS) RWY 25

INDIANAPOLIS RGNL (MQJ)

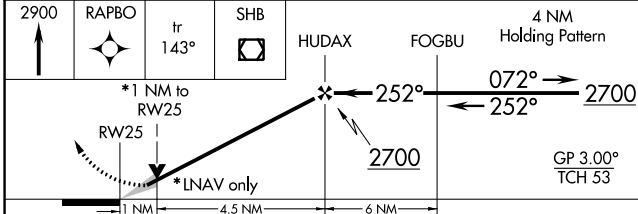
⚠ For uncompensated Baro-VNAV systems, LNAV/VNAV NA below -16°C (4°F) or above 54°C (130°F). Baro-VNAV and VDP NA when using Indianapolis Intl altimeter setting. DME/DME RNP-0.3 NA. When local altimeter setting not received, use Indianapolis Intl altimeter setting and increase all DA 55 feet and all MDA 60 feet, and increase all visibilities ½ SM. When using Indianapolis altimeter setting inoperative table does not apply. For inoperative ALS, increase LPV all Cats visibility to 1 SM.

MALS

MISSED APPROACH:
 Climb to 2900 direct RAPBO and on track 143° to SHB VOR/DME and hold.

AWOS-3PT 124.175	INDIANAPOLIS APP CON 127.15 317.8	CLNC DEL 119.25	UNICOM 122.975 (CTAF) 📻
----------------------------	---	---------------------------	--



2900	RAPBO	ir 143°	SHB	HUDAX	FOGBU	4 NM Holding Pattern
------	-------	---------	-----	-------	-------	----------------------



CATEGORY	A	B	C	D
LPV DA	1160-½		300 (300-½)	
LNAV/VNAV DA	1259-¾		399 (400-¾)	
LNAV MDA	1220-½ 360 (400-½)		1220-⅝ 360 (400-⅝)	
C CIRCLING	1340-1 478 (500-1)		1360-1½ 498 (500-1½) 1660-2½ 798 (800-2½)	

ELEV 862	TDZE 860
----------	----------

REIL Rwy 7 and 34
 HIRL Rwy 7-25 **📻**
 MIRL Rwy 16-34

EC-2, 31 OCT 2024 to 28 NOV 2024

EC-2, 31 OCT 2024 to 28 NOV 2024