

WAAS CH 69646 W07A	APP CRS 072°	Rwy Idg TDZE Apt Elev	6005 862 862
--	------------------------	-----------------------------	---

RNAV (GPS) RWY 7

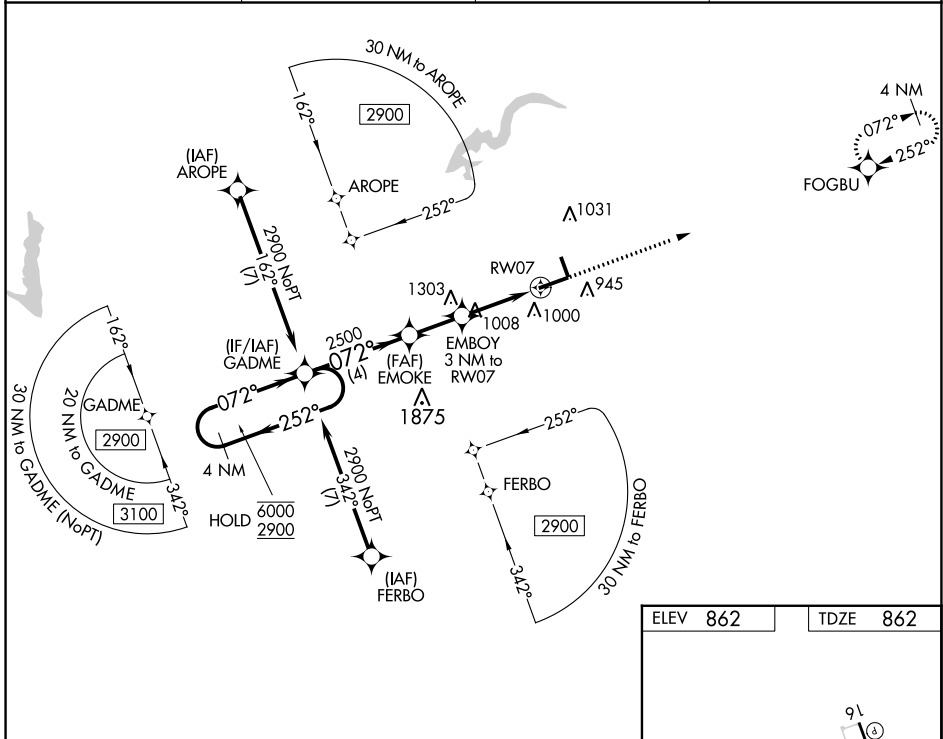
INDIANAPOLIS RGNL (MQJ)

RNP APCH - GPS.

▼ For uncompensated Baro-VNAV systems, LNAV/VNAV NA below -16°C or above 54°C.
 ▲ Rwy 7 helicopter visibility reduction below 3/4 SM NA. Baro-VNAV and VDP NA when using IND altimeter setting. When local altimeter setting not received, use IND altimeter setting and increase LPV DA to 1271 feet and all visibilities 1/8 SM; increase LNAV/VNAV DA to 1194 feet and all visibilities 1/8 SM; increase all MDAs 60 feet and LNAV visibility Cat C and D 1/4 SM.

MISSED APPROACH: Climb to 2700 direct FOGBU and hold.

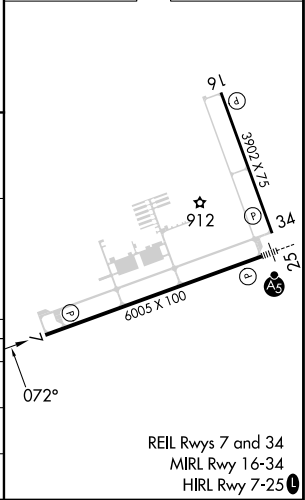
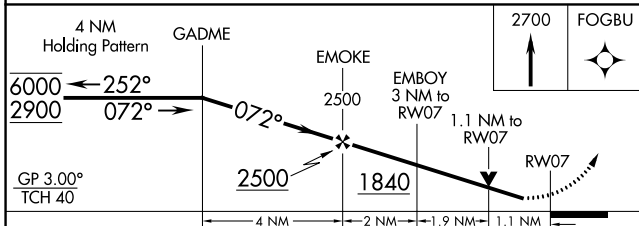
AWOS-3PT 124.175	INDIANAPOLIS APP CON 127.15 317.8	CINC DEL 119.25	UNICOM 122.975 (CTAF) U
----------------------------	---	---------------------------	--



EC-2, 31 OCT 2024 to 28 NOV 2024

EC-2, 31 OCT 2024 to 28 NOV 2024

ELEV 862	TDZE 862
----------	----------



REIL Rwy 7 and 34
 MIRL Rwy 16-34
 HIRL Rwy 7-25 **U**

CATEGORY	A	B	C	D
LPV DA		1216-1	354 (400-1)	
LNAV/VNAV DA		1139-7/8	277 (300-7/8)	
LNAV MDA	1260-1	398 (400-1)	1260-1 1/8	398 (400-1 1/8)