

WAAS CH 86728 W18A	APP CRS 178°	Rwy Idg 3204 TDZE 256 Apt Elev 256
--	------------------------	---

RNAV (GPS) RWY 18

JONESBORO (F88)

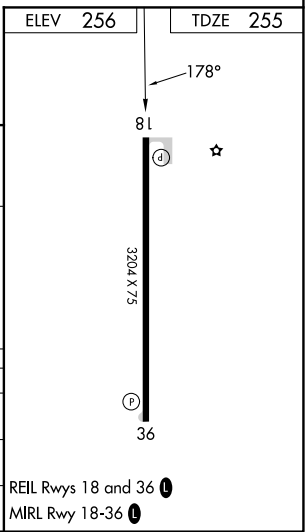
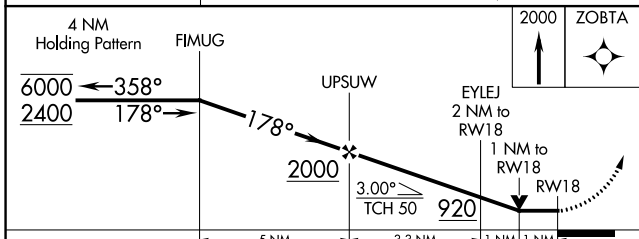
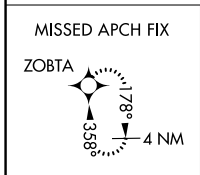
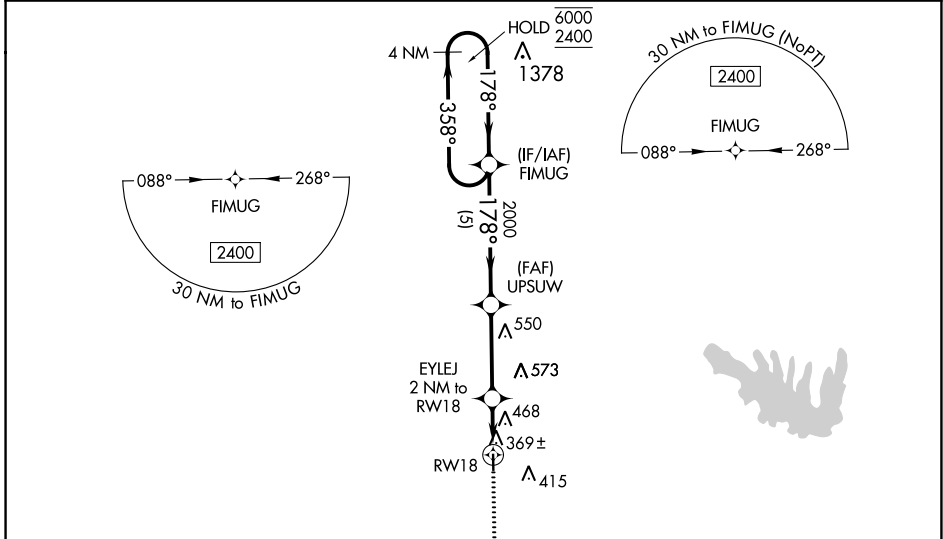
RNP APCH - GPS.

▼ Rwy 18 helicopter visibility reduction below ¼ SM NA. Obtain local altimeter setting on CTAF; when not received, use Ruston altimeter setting and increase all MDAs 60 feet, and LNAV visibility Cat C ½ SM, LP visibility Cat C ¼ SM, and Circling visibility Cat C ¼ SM. VDP NA when using Ruston altimeter setting.

MISSED APPROACH:
Climb to 2000 direct ZOBTA and hold.

MONROE APP CON ★ **126.9 307.9**

CTAF **122.9**



CATEGORY	A	B	C	D
LP MDA	620-1 365 (400-1)			NA
LNAV MDA	720-1	465 (500-1)	720-1 3/8 465 (500-1 3/8)	NA
CIRCLING	780-1	524 (600-1)	880-1 3/4 624 (700-1 3/4)	NA

SC-4, 31 OCT 2024 to 28 NOV 2024

SC-4, 31 OCT 2024 to 28 NOV 2024