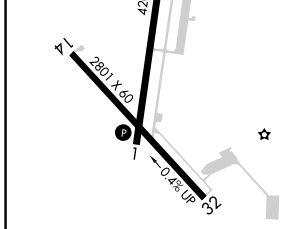
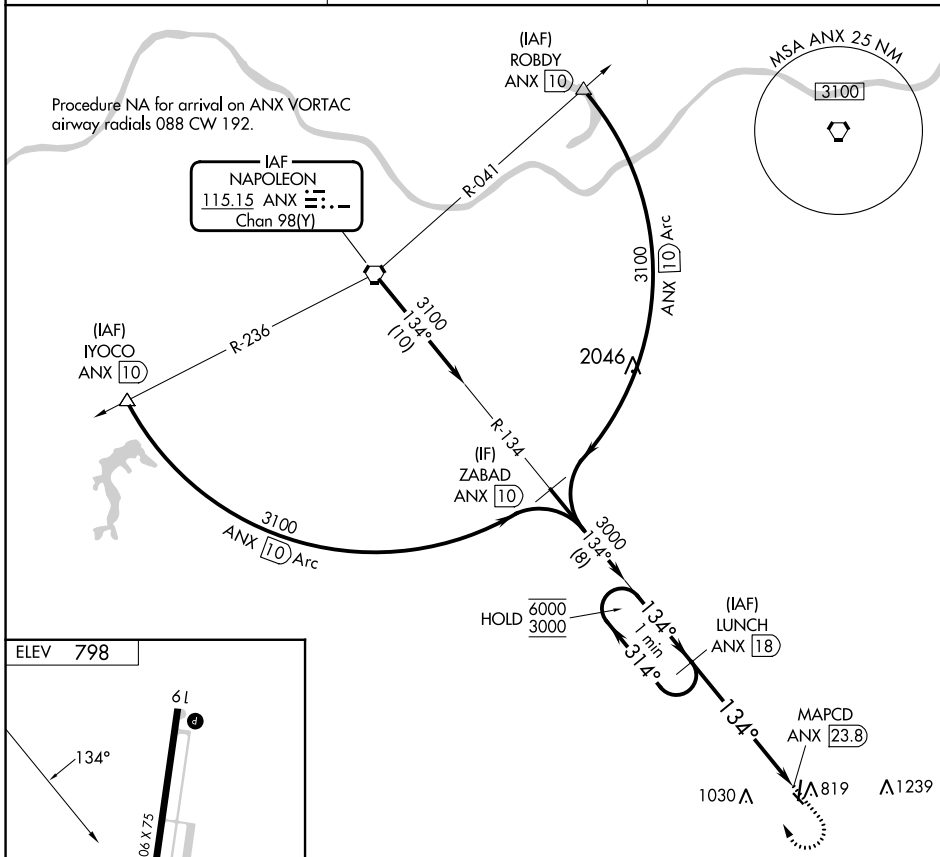


VORTAC ANX <b>115.15</b> Chan <b>98(Y)</b>	APP CRS <b>134°</b>	Rwy Idg TDZE Apt Elev <b>N/A</b> <b>N/A</b> <b>798</b>
--	------------------------	---

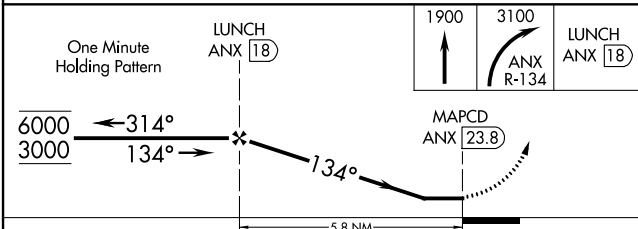
**VOR-A**  
SKYHAVEN (RCM)

DME required.	MISSED APPROACH: Climb to 1900 then climbing right turn to 3100 on ANX VORTAC R-134 to LUNCH/18 DME and hold, continue climb-in-hold to 3100.
<b>∇</b> <b>▲</b>	Circling Rwy 32 NA at night.

AWOS-3PT <b>119.575</b>	WHITEMAN APP CON * <b>127.45 284.0</b>	UNICOM <b>123.0 (CTAF) 0</b>
----------------------------	---	---------------------------------



REIL Rwy 1 and 19  
REIL Rwy 14 and 32  
MIRL Rwy 1-19 and 14-32



CATEGORY	A	B	C	D
<b>C</b> CIRCLING	1340-1	542 (600-1)	1380-1½ 582 (600-1½)	NA

NC-3, 31 OCT 2024 to 28 NOV 2024

NC-3, 31 OCT 2024 to 28 NOV 2024