

WAAS CH <b>65824</b> <b>W04A</b>	APP CRS <b>040°</b>	Rwy Idg TDZE Apt Elev	<b>5007</b> <b>66</b> <b>70</b>
--	------------------------	-----------------------------	---------------------------------------

# RNAV (GPS) RWY 4

SUFFOLK EXEC (SF'Q)

RNP APCH.

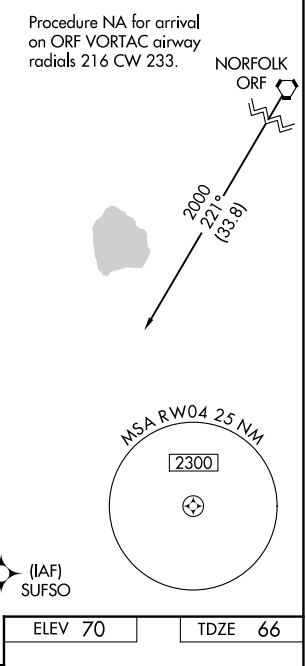
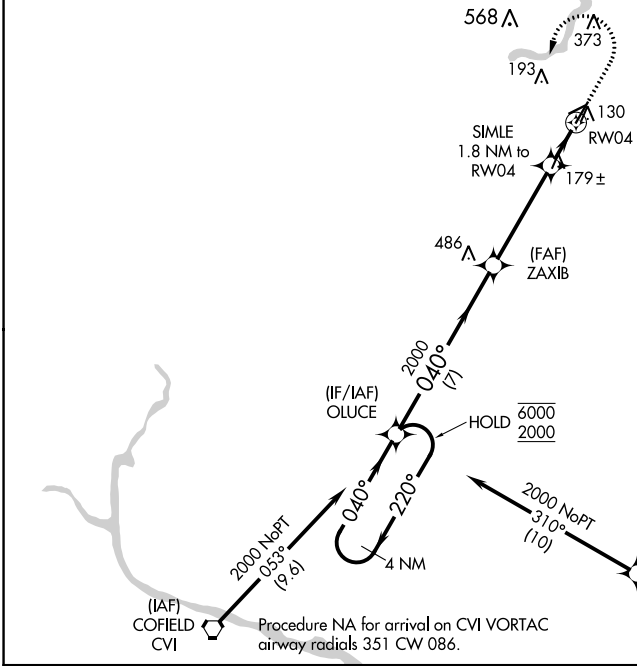
▼ For uncompensated Baro-VNAV systems, LNAV/VNAV NA below -15°C or above 54°C.

MISSED APPROACH:  
Climb to 600 then climbing left turn to 2000 direct OLUCE and hold.

AWOS-3  
**119.375**

NORFOLK APP CON  
**127.9 269.425**

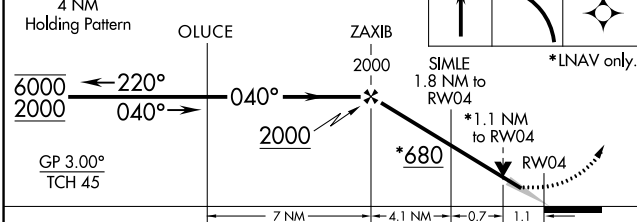
UNICOM  
**122.7 (CTAF)**



NE-3, 31 OCT 2024 to 28 NOV 2024

NE-3, 31 OCT 2024 to 28 NOV 2024

VGSI and RNAV glidepath not coincident (VGSI Angle 3.00/TCH 39).



ELEV 70	TDZE 66
---------	---------

CATEGORY	A	B	C	D
LPV DA		322-7/8	256 (300-7/8)	
LNAV/VNAV DA		474-1 3/8	408 (500-1 3/8)	
LNAV MDA		440-1	374 (400-1)	
CIRCLING	500-1 430 (500-1)	560-1 490 (500-1)	680-1 3/4 610 (700-1 3/4)	680-2 610 (700-2)

