

APP CRS 168°	Rwy Idg 4000
	TDZE 484
	Apt Elev 484

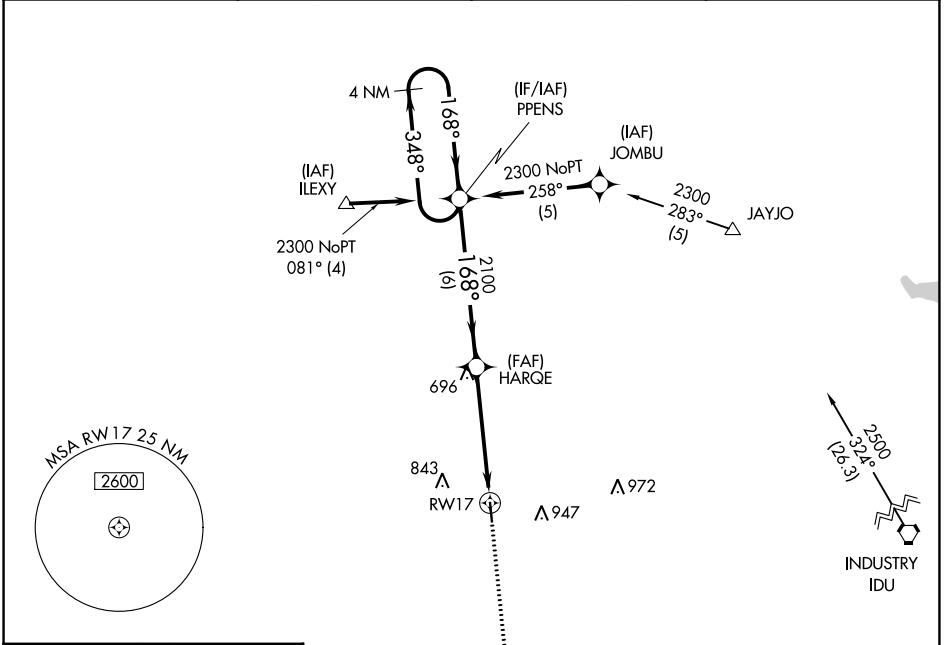
RNAV (GPS) RWY 17

GIDDINGS-LEE COUNTY (GYB)

⚠ DME/DME RNP-0.3 NA. Helicopter visibility reduction below 1 SM NA.
⚠ Procedure NA at night. When local altimeter setting not received, use Austin-Bergstrom Intl altimeter setting and increase all MDA 100 feet; increase visibility Cat C ¼ SM.

MISSED APPROACH:
 Climb to 2500 direct RAMOS and hold.

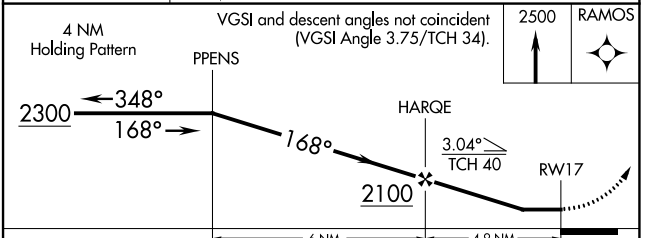
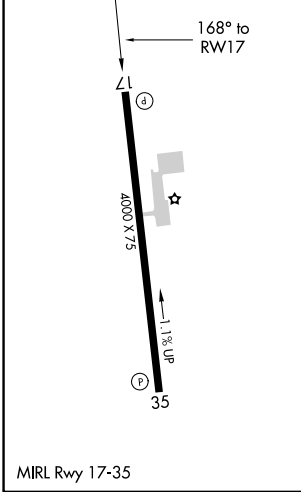
AWOS-3 119.225	AUSTIN APP CON 127.225 317.65	UNICOM 123.05 (CTAF)
---------------------------------	--	---------------------------------------



SC-5, 31 OCT 2024 to 28 NOV 2024

SC-5, 31 OCT 2024 to 28 NOV 2024

ELEV 484	TDZE 484
-----------------	-----------------



CATEGORY	A	B	C	D
LNAV MDA	940-1	456 (500-1)	940-1¼ 456 (500-1¼)	NA
CIRCLING	940-1 456 (500-1)	1160-1 676 (700-1)	1240-2¼ 756 (800-2¼)	NA