

COPTER RNAV (GPS) X RWY 31

GRANT COUNTY (W99)

APP CRS	Rwy Idg	5000
310°	TDZE	957
	Apt Elev	963

RNP APCH.

NA When local altimeter setting not received, procedure NA.

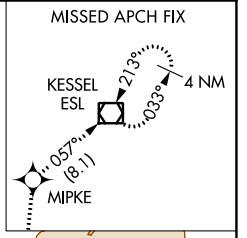
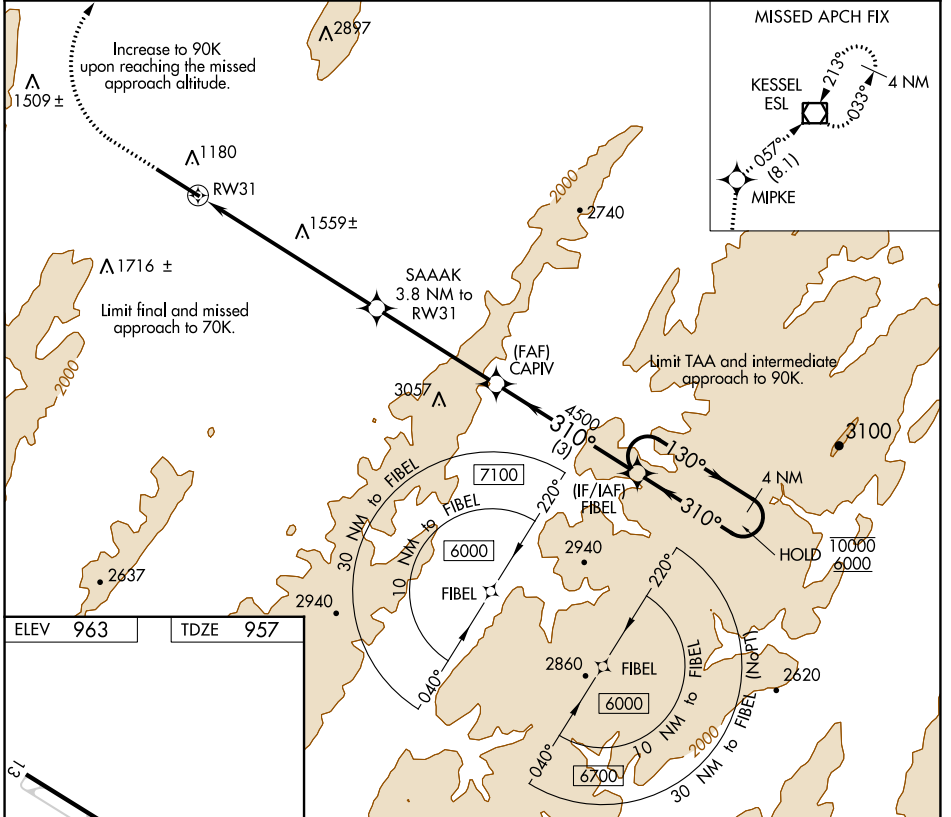
-8°C

MISSED APPROACH: Climb to 1380 then climbing right turn to 5000 direct MIPKE and on track 057° to ESL VOR/DME and hold.

AWOS-3
124.475

WASHINGTON CENTER
133.55 322.55

UNICOM
122.8 (CTAF)



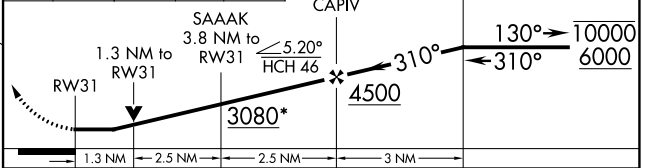
NE-4, 31 OCT 2024 to 28 NOV 2024

NE-4, 31 OCT 2024 to 28 NOV 2024

ELEV	963	TDZE	957
------	-----	------	-----



1380	5000	MIPKE	tr 057°	ESL	VGSI and descent angles not coincident (VGSI Angle 6.50/TCH 46).
					FIBEL Holding Pattern 4 NM



REIL Rws 13 and 31	1
MIRL Rwy 13-31	1
CATEGORY	COPTER
LNAV MDA	1880- ³ / ₄ 923 (1000- ³ / ₄)

COPTER RNAV (GPS) X RWY 31