

WAAS CH 58131 W31A	APP CRS 295°	Rwy Idg TDZE Apt Elev	5000 957 963
--	------------------------	-----------------------------	---

RNAV (GPS) Y RWY 31

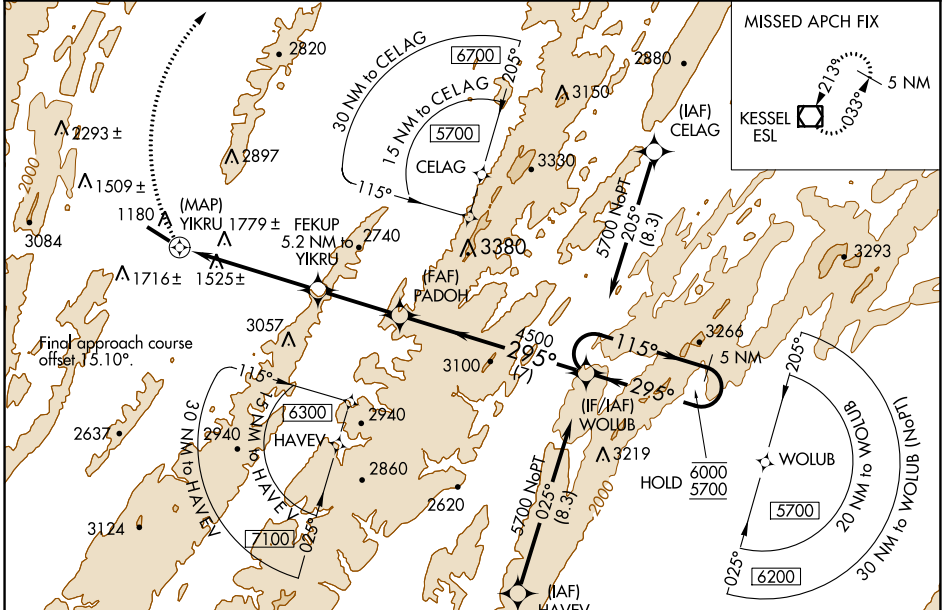
GRANT COUNTY (W99)

RNP APCH-GPS.

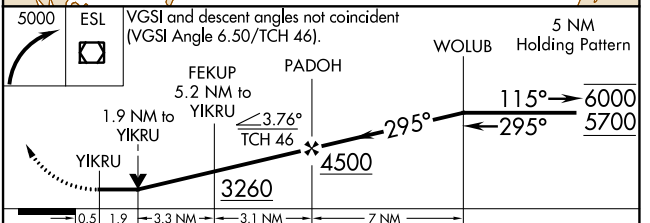
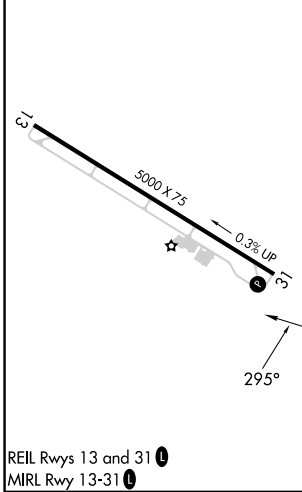
▼ Rwy 31 helicopter visibility reduction below 3/4 SM NA.
▲ When local altimeter setting not received, procedure NA.
☼ -8°C

MISSED APPROACH: Climbing right turn to 5000 direct ESL VOR/DME and hold.

AWOS-3 124.475	WASHINGTON CENTER 133.55 322.55	UNICOM 122.8 (CTAF) 0
--------------------------	---	---------------------------------



ELEV 963	TDZE 957
----------	----------



CATEGORY	A	B	C	D
LP MDA	2620-1¼ 1663 (1700-1¼)	2620-1½ 1663 (1700-1½)		NA
LNAV MDA	2740-1¼ 1783 (1800-1¼)	2740-1½ 1783 (1800-1½)		NA
C CIRCLING	2740-1¼ 1777 (1800-1¼)	2740-1½ 1777 (1800-1½)		NA

NE-4, 31 OCT 2024 to 28 NOV 2024

NE-4, 31 OCT 2024 to 28 NOV 2024