

WAAS CH <b>65937</b> <b>W21A</b>	APP CRS <b>212°</b>	Rwy Idg TDZE Apt Elev	<b>5500</b> <b>164</b> <b>164</b>
--	------------------------	-----------------------------	---

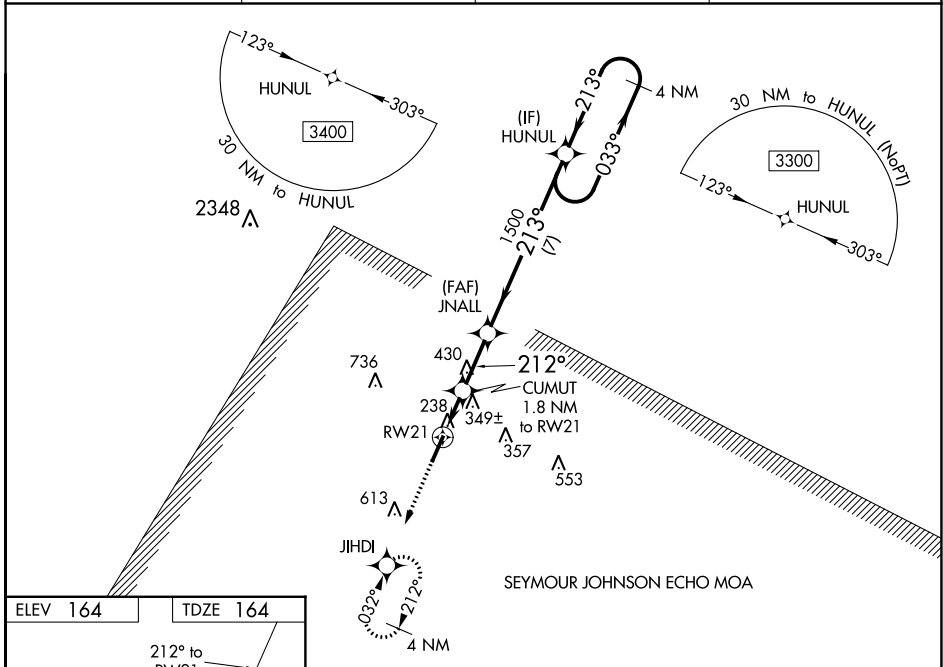
# RNAV (GPS) RWY 21

JOHNSTON RGNL (JNX)

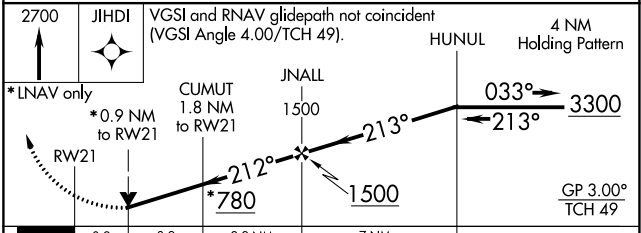
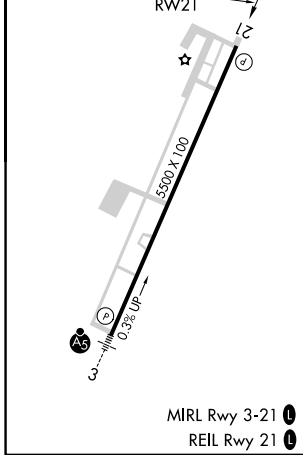
**⚠** For uncompensated Baro-VNAV systems, LNAV/VNAV NA below -15°C (5°F) or above 54°C (130°F). DME/DME RNP-0.3 NA. When local altimeter setting not received, use Erwin altimeter setting and increase all DA 50 feet and all MDA 60 feet; increase LPV all Cats and Circling Cat C visibility ¼ mile; increase LNAV/VNAV all Cats and LNAV Cats C/D visibility ⅓ mile. Baro-VNAV and VDP NA with Erwin altimeter setting. Helicopter visibility reduction below ¾ SM NA.

**MISSED APPROACH:** Climb to 2700 direct JIHDI and hold, continue climb-in-hold to 2700.

<b>AWOS-3</b> <b>120.225</b>	<b>RALEIGH APP CON</b> <b>125.3 353.675</b>	<b>GCO</b> <b>135.075</b>	<b>UNICOM</b> <b>122.725 (CTAF) ①</b>
---------------------------------	--	------------------------------	--



ELEV 164	TDZE 164
----------	----------



CATEGORY	A	B	C	D
LPV DA		518-1½	354 (400-1½)	
LNAV/VNAV DA		666-1¾	502 (600-1¾)	
LNAV MDA	600-1	436 (500-1)	600-1¼	436 (500-1¼)
<b>C</b> CIRCLING	660-1	496 (500-1)	920-2¼ 756 (800-2¼)	1100-3 936 (1000-3)

SE-2, 31 OCT 2024 to 28 NOV 2024

SE-2, 31 OCT 2024 to 28 NOV 2024