

WAAS CH <b>53436</b> <b>W10A</b>	APP CRS <b>101°</b>	Rwy Idg TDZE <b>434</b> Apt Elev <b>435</b>
--	------------------------	---

# RNAV (GPS) RWY 10

CLAYTON MUNI (11A)

RNP APCH - GPS.

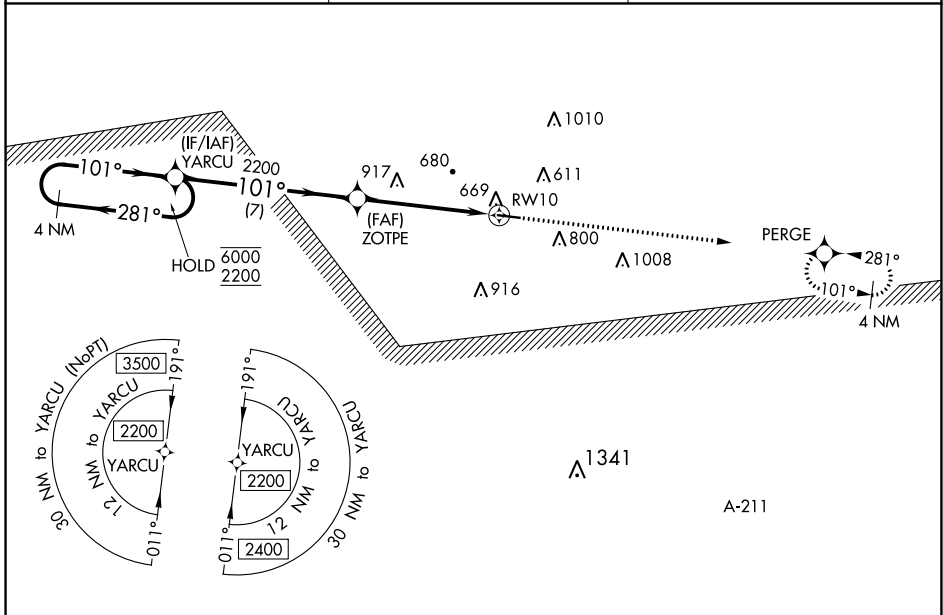
MISSED APPROACH: Climb to 2200 direct PERGE and hold.

**▽** Rwy 10 helicopter visibility reduction below 3/4 SM NA. Baro-VNAV NA.  
**▲** NA Use Eufaula altimeter setting; when not received, use Troy altimeter setting.

EUF ASOS  
**128.325**

CAIRNS APP CON \*  
**121.1 319.25**

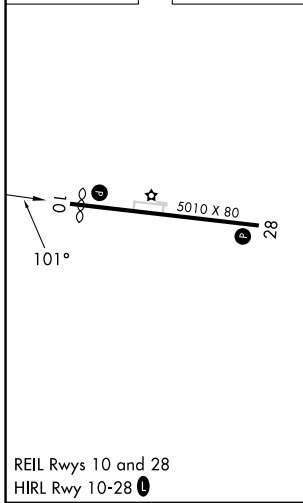
CTAF  
**122.90**



SE-4, 31 OCT 2024 to 28 NOV 2024

SE-4, 31 OCT 2024 to 28 NOV 2024

ELEV <b>435</b>	TDZE <b>434</b>
-----------------	-----------------



VGSI and RNAV glidepath not coincident (VGSI Angle 3.20/TCH 30).				2200 	PERGE 
4 NM Holding Pattern YARCU 6000 ← 281° 2200 ← 101°	YARCU 2200 2200	ZOTPE 2200	7 NM	5.5 NM	RWY 10 
CATEGORY	A	B	C	D	
LPV DA	781-1 347 (400-1)				
LNAV/VNAV DA	1115-2½ 681 (700-2½)				
LNAV MDA	1180-1 746 (800-1)	1180-1¼ 746 (800-1¼)	1180-2 746 (800-2)		
<b>C</b> CIRCLING	1180-1 745 (800-1)	1180-1¼ 745 (800-1¼)	1180-2¼ 745 (800-2¼)	1300-2¾ 865 (900-2¾)	