

WAAS CH <b>87031</b> <b>W27A</b>	APP CRS <b>240°</b>	Rwy Idg TDZE Apt Elev	<b>6101</b> <b>4702</b> <b>4705</b>
--	------------------------	-----------------------------	---

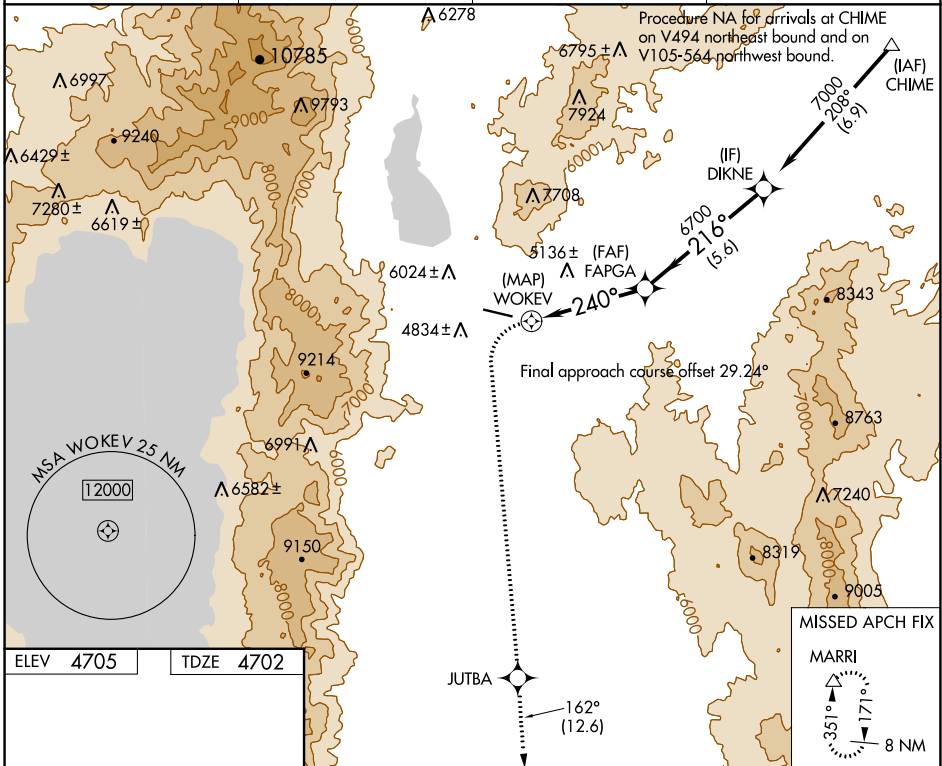
# RNAV (GPS) RWY 27

CARSON CITY (CXP)

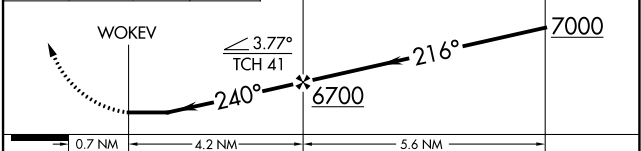
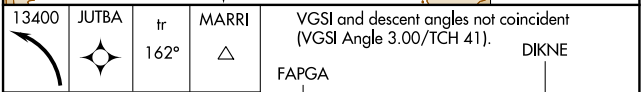
**NA** DME/DME RNP-0.3 NA. Procedure NA at night. When local altimeter setting not received use Reno/Tahoe altimeter setting and increase all MDA 540 feet. Helicopter visibility reduction below 1 SM not authorized. Circling NA north of Rwy 9-27.

**MISSED APPROACH:** Climbing left turn to 13400 direct JUTBA and on track 162° to MARRI and hold, continue climb-in-hold to 13400.

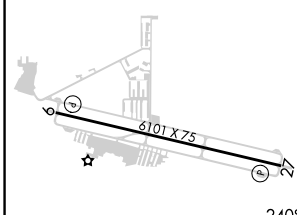
AWOS-3PT <b>119.925</b>	NORCAL APP CON <b>119.2 279.55</b>	CLNC DEL <b>133.25</b>	UNICOM <b>123.0 (CTAF)</b>
----------------------------	---------------------------------------	---------------------------	-------------------------------



ELEV 4705	TDZE 4702
-----------	-----------



CATEGORY	A	B	C	D
LP MDA	5900-1¼ 1198 (1200-1¼)	5900-1½ 1198 (1200-1½)	NA	
LNAV MDA	6180-1¼ 1478 (1500-1¼)	6180-1½ 1478 (1500-1½)	NA	
<b>C</b> CIRCLING	6180-1¼ 1475 (1500-1¼)	6180-1½ 1475 (1500-1½)	NA	



TDZL Rwy 9 and 27  
MIRL Rwy 9-27  
REIL Rwy 9 and 27

SW-4, 31 OCT 2024 to 28 NOV 2024

SW-4, 31 OCT 2024 to 28 NOV 2024