

APP CRS 279°	Rwy Idg 3753 TDZE 1063 Apt Elev 1070
------------------------	---

RNAV (GPS) RWY 28

YOUNGSTOWN ELSER METRO (4G4)

RNP APCH - GPS.

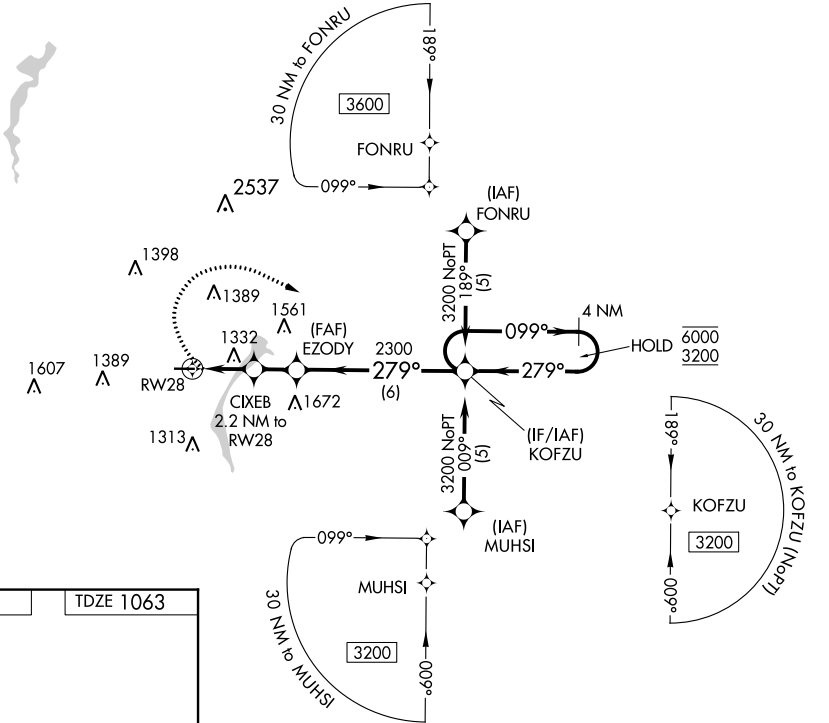
NA Procedure NA at night. Rwy 28 helicopter visibility reduction below 1 SM NA. Obtain local altimeter setting on CTAF; when not received, use New Castle altimeter setting and increase all MDA 40 feet.

MISSED APPROACH: Climbing right turn to 3200 direct KOFZU and hold.

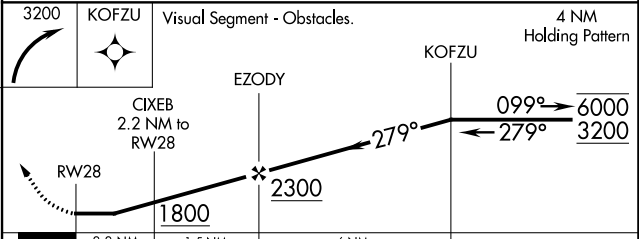
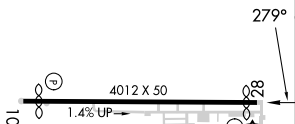
YOUNGSTOWN APP CON ★
133.95 322.3

CLNC DEL
119.25

UNICOM
123.05 (CTAF)



ELEV 1070	TDZE 1063
-----------	-----------



CATEGORY	A	B	C	D
LNAV MDA	1600-1	537 (600-1)	NA	
CIRCLING	1660-1	590 (600-1)	NA	

MIRL Rwy 10-28
REIL Rwy 10 and 28

EC-2, 31 OCT 2024 to 28 NOV 2024

EC-2, 31 OCT 2024 to 28 NOV 2024