

| | | |
|--|------------------------|---|
| WAAS CH 72807 W14A | APP CRS 147° | Rwy Idg 4600 TDZE 1142 Apt Elev 1145 |
|--|------------------------|---|

RNAV (GPS) RWY 14

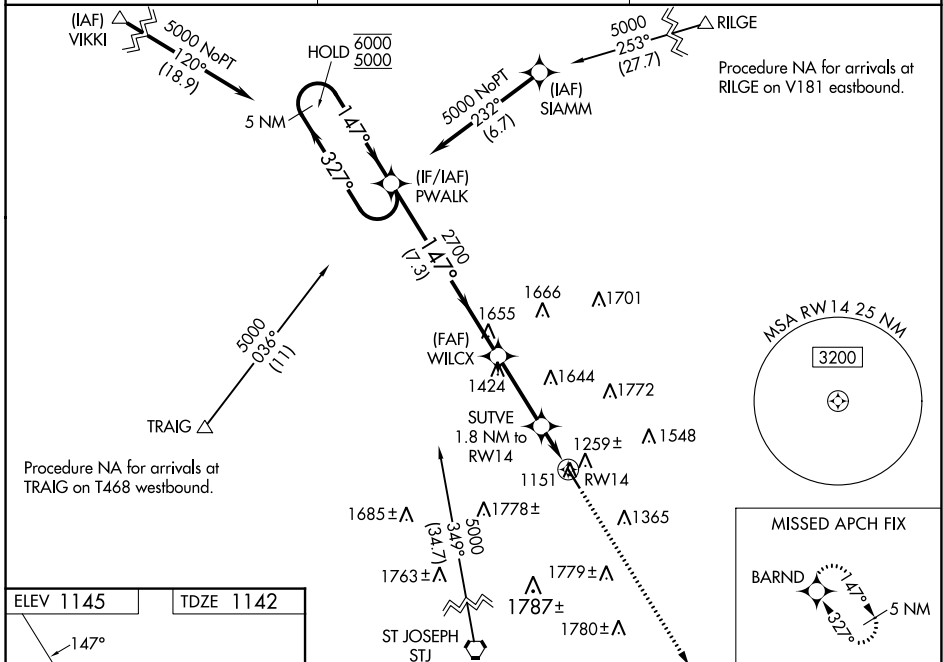
NORTHWEST MISSOURI RGNL (EVU)

RNP APCH - GPS.

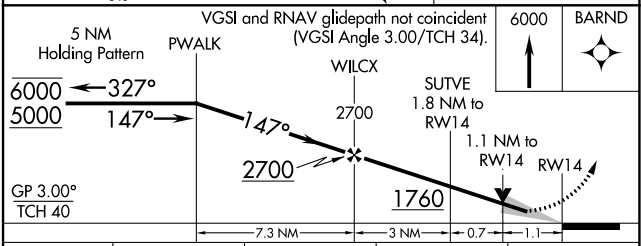
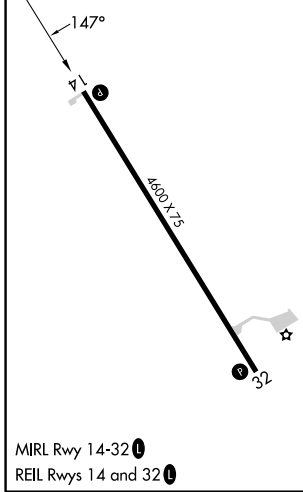
NA Circling NA east of Rwy 14-32. For uncompensated Baro-VNAV systems, LNAV/VNAV NA below -17°C or above 54°C. When local altimeter setting not received, use St. Joseph altimeter setting and increase LPV DA to 1517 feet, LNAV/VNAV DA to 1682 feet and all visibilities ½ SM. Increase all MDAs 140 feet, and LNAV visibility Cat C ¾ SM. Baro-VNAV and VDP NA when using St. Joseph altimeter setting.

MISSED APPROACH: Climb to 6000 direct BARND and hold, continue climb-in-hold to 6000.

| | | |
|----------------------------|--|-------------------------------|
| AWOS-3PT 118.225 | MINNEAPOLIS CENTER 119.6 290.4 | UNICOM 122.8 (CTAF) |
|----------------------------|--|-------------------------------|



| | |
|-----------|-----------|
| ELEV 1145 | TDZE 1142 |
|-----------|-----------|



| CATEGORY | A | B | C | D |
|--------------|------------------------|-----------------------|------------------------|----|
| LPV DA | 1392-1 250 (300-1) | | | NA |
| LNAV/VNAV DA | 1557-1 ¾ 415 (500-1 ¾) | | | NA |
| LNAV MDA | 1520-1 378 (400-1) | | | NA |
| CIRCLING | 1560-1 415 (500-1) | 1600-1 455 (500-1) | 2120-3 975 (1000-3) | NA |

NC-3, 31 OCT 2024 to 28 NOV 2024

NC-3, 31 OCT 2024 to 28 NOV 2024