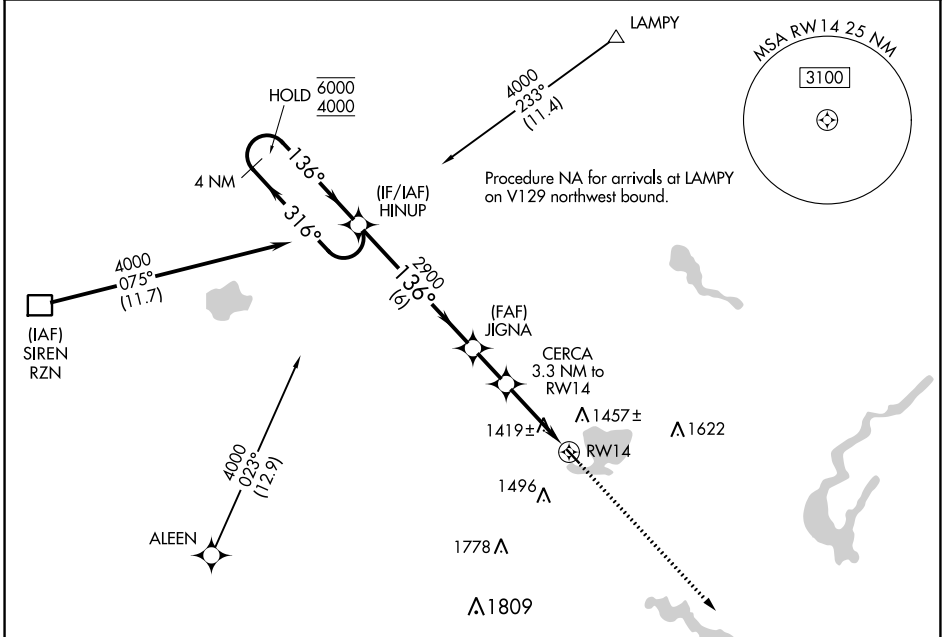


APP CRS	Rwy Idg	2881
136°	TDZE	1233
	Apt Elev	1233

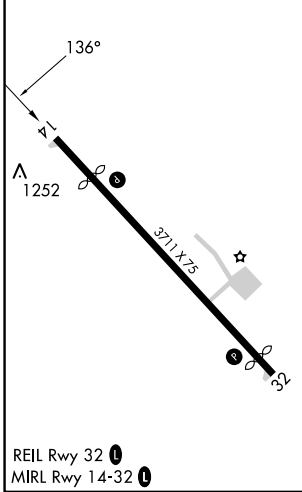
RNAV (GPS) RWY 14

SHELL LAKE MUNI (SSQ)

RNP APCH.		MISSED APPROACH: Climb to 4000 direct QESCA and hold.
Procedure NA at night. Rwy 14 helicopter visibility reduction below 1 SM NA. Use Cumberland altimeter setting.		
UBE AWOS-3PT 119.175	MINNEAPOLIS CENTER 126.45 276.4	UNICOM 122.8 (CTAF)



ELEV	1233	D	TDZE	1233
------	------	----------	------	------



4 NM Holding Pattern		VGSI and descent angles not coincident (VGSI Angle 4.00/TCH 22).		4000	QESCA
6000 ← 316° 4000 → 136°		JIGNA 2900 3.04° TCH 40°		↑	△
		CERCA 3.3 NM to RW14 2320		RW14	
		6 NM 1.7 NM 3.3 NM			
CATEGORY	A	B	C	D	
LNAV MDA	1740-1 507 (600-1)		1740-1½ 507 (600-1½)		
CIRCLING	1840-1 607 (700-1)		1840-1¾ 607 (700-1¾) 2020-2½ 787 (800-2½)		

EC-3, 31 OCT 2024 to 28 NOV 2024

EC-3, 31 OCT 2024 to 28 NOV 2024