

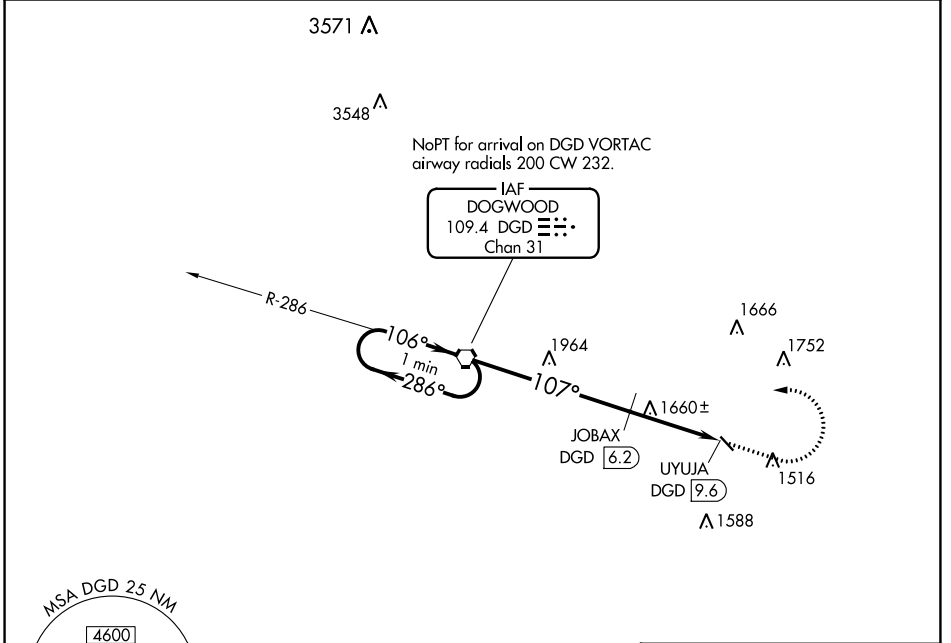
VORTAC DGD 109.4 Chan 31	APP CRS 107°	Rwy Idg TDZE Apt Elev N/A N/A 1311
--	------------------------	--

VOR-A

AVA BILL MARTIN MEML (AOV)

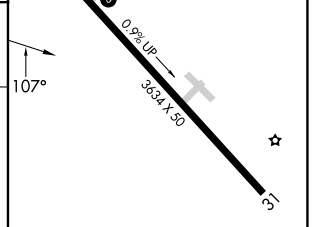
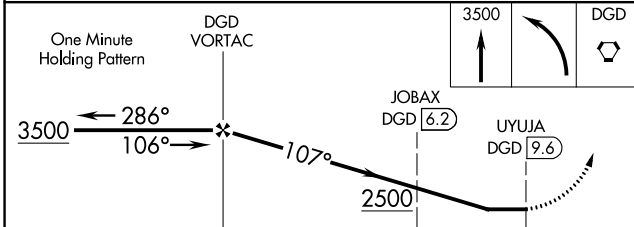
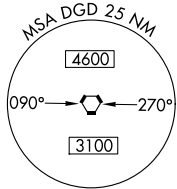
<p>▽ Procedure NA at night. ▲ NA Use Branson altimeter setting, when not received use Springfield Branson Natl altimeter setting.</p>	<p>MISSED APPROACH: Climb to 3500 then left turn direct DGD VORTAC and hold.</p>
---	--

<p>BBG AWOS-3 124.625</p>	<p>SPRINGFIELD APP CON 126.35</p>	<p>UNICOM 122.7 (CTAF) ①</p>
--------------------------------------	--	---



NC-3, 31 OCT 2024 to 28 NOV 2024

NC-3, 31 OCT 2024 to 28 NOV 2024



	6.2 NM		3.4 NM	
CATEGORY	A	B	C	D
CIRCLING	2500-1 $\frac{1}{4}$ 1189 (1200-1 $\frac{1}{4}$)	2500-1 $\frac{1}{2}$ 1189 (1200-1 $\frac{1}{2}$)	NA	
JOBAX FIX MINIMUMS (DME REQUIRED)				
CIRCLING	2020-1	709 (800-1)	NA	

MIRL Rwy 13-31 ①	FAF to MAP 9.6 NM				
Knots	60	90	120	150	180
Min:Sec	9:36	6:24	4:48	3:50	3:12

VOR-A