

| | | |
|--|------------------------|---|
| WAAS CH 86428 W21A | APP CRS 211° | Rwy Idg 5003 TDZE 470 Apt Elev 473 |
|--|------------------------|---|

RNAV (GPS) RWY 21

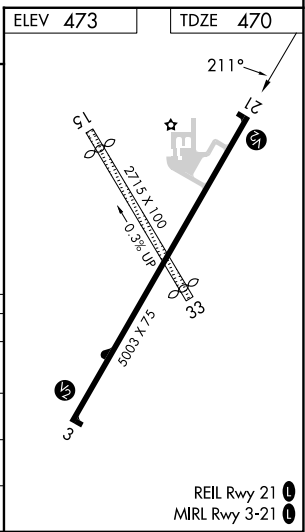
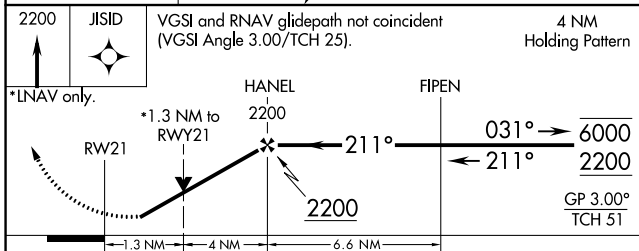
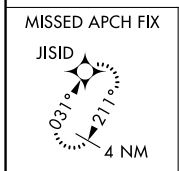
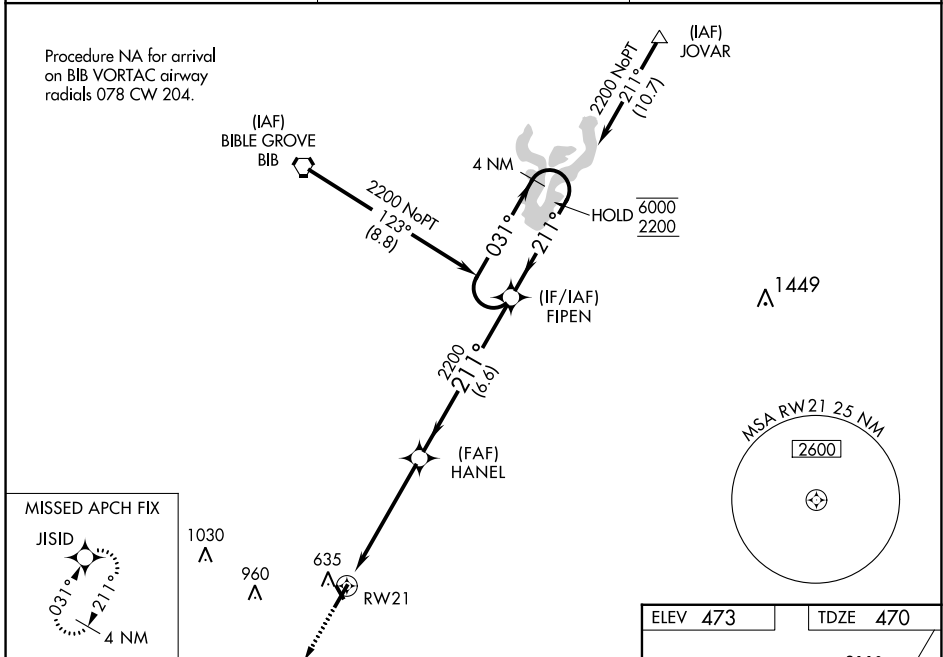
FLORA MUNI (F.O.A.)

RNP APCH.

⚠ Circling NA to Rwy 15 and 33. Baro-VNAV and VDP NA when using Olney-Noble altimeter setting.
 ⚠ For uncompensated Baro-VNAV systems, LNAV/VNAV NA below -17°C or above 54°C. Rwy 21 helicopter visibility reduction below 3/4 SM NA. When local altimeter setting not received, use Olney-Noble altimeter setting and increase LPV DA to 779 feet, LNAV/VNAV DA to 838 feet and increase LNAV/VNAV visibility all Cats 1/8 SM, increase all MDA 40 feet.

MISSED APPROACH:
Climb to 2200 direct JISID and hold.

| | | |
|--------------------------|--|---------------------------------|
| AWOS-3 120.175 | KANSAS CITY CENTER 127.7 351.825 | UNICOM 122.7 (CTAF) 0 |
|--------------------------|--|---------------------------------|



| CATEGORY | A | B | C | D |
|--------------|-------|-------------|------------------------------|----|
| LPV DA | | 746-1 | 276 (300-1) | NA |
| LNAV/VNAV DA | | 805-1 | 335 (400-1) | NA |
| LNAV MDA | 920-1 | 450 (500-1) | 920-1 3/8 450 (500-1 3/8) | NA |
| CIRCLING | 940-1 | 467 (500-1) | 1160-2 687 (700-2) | NA |

EC-3, 31 OCT 2024 to 28 NOV 2024

EC-3, 31 OCT 2024 to 28 NOV 2024