

WAAS CH 86838 W16A	APP CRS 157°	Rwy Idg 5001 TDZE 774 Apt Elev 774
--	------------------------	---

RNAV (GPS) RWY 16

CASTROVILLE MUNI (CVB)

⚠ DME/DME RNP-0.3 NA. When local altimeter setting not received, use Lackland AFB (Kelly FLD Annex) altimeter setting: increase all MDA 60 feet, increase all Cat C visibilities ¼ mile. Helicopter visibility reduction below 1 SM NA. Night landing: Rwy 16 NA.

MISSED APPROACH: Climb to 3000 direct SHEOL and hold.

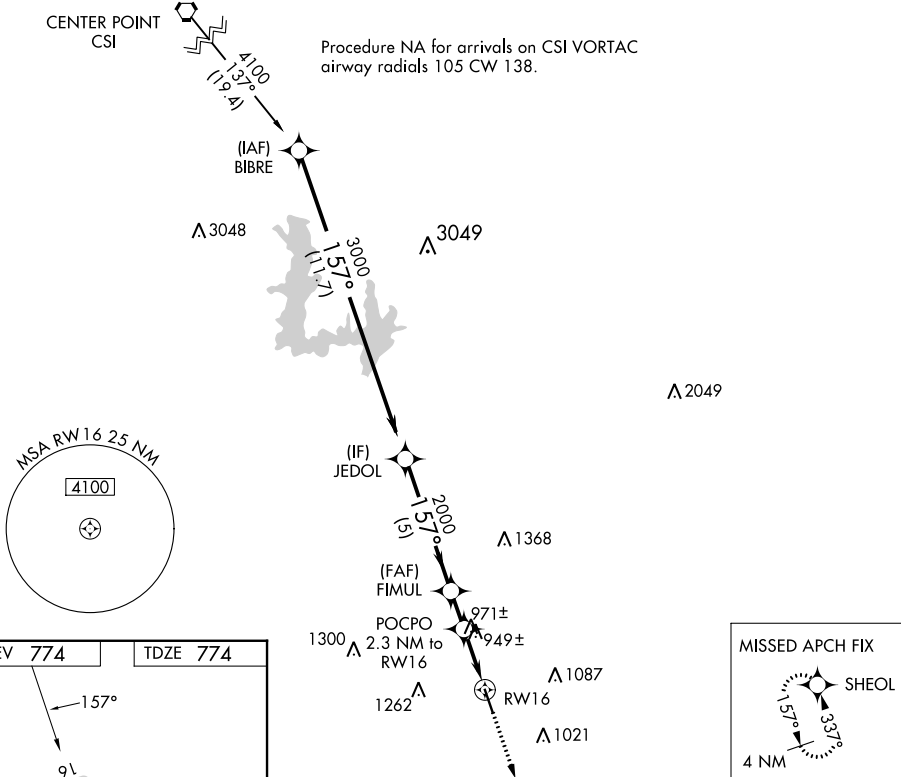
AWOS-3
119.25

SAN ANTONIO APP CON
118.05 353.5

UNICOM
122.8 (CTAF) 0

CENTER POINT
CSI

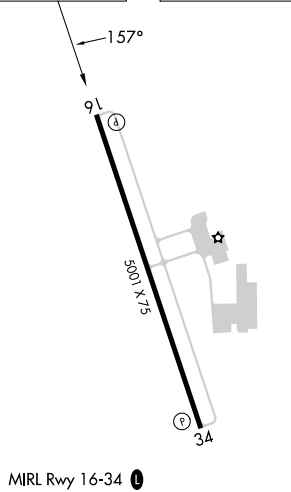
Procedure NA for arrivals on CSI VORTAC
airway radials 105 CW 138.



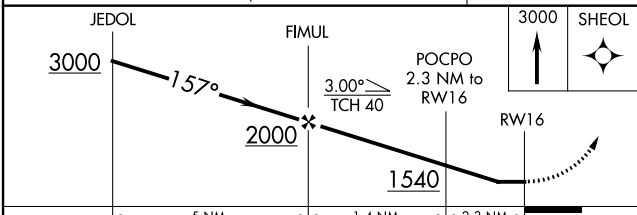
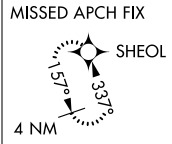
SC-3, 31 OCT 2024 to 28 NOV 2024

SC-3, 31 OCT 2024 to 28 NOV 2024

ELEV **774** TDZE **774**



MIRL Rwy 16-34 **0**



	5 NM		1.4 NM	2.3 NM	
CATEGORY	A	B	C	D	
LP MDA	1200-1	426 (500-1)	1200-1¼ 426 (500-1¼)	NA	
LNAV MDA	1240-1	466 (500-1)	1240-1⅜ 466 (500-1⅜)	NA	
C CIRCLING	1240-1 466 (500-1)	1380-1 606 (700-1)	1580-2¼ 806 (900-2¼)	NA	