

WAVERLY, IOWA

AL-6558 (FAA)

22223

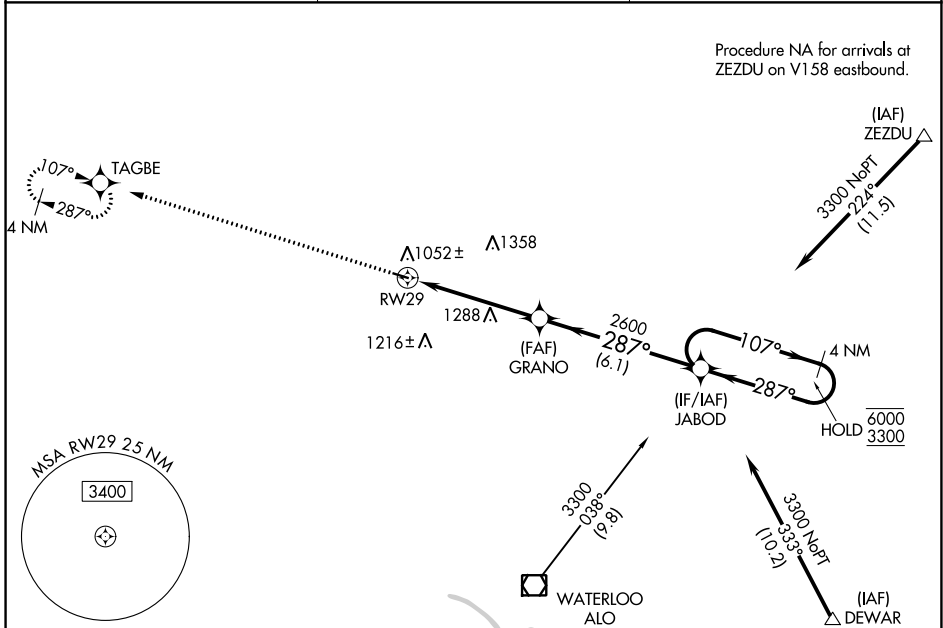
WAAS CH <b>78343</b> <b>W29A</b>	APP CRS <b>287°</b>	Rwy Idg TDZE Apt Elev	<b>3200</b> <b>992</b> <b>992</b>
--	------------------------	-----------------------------	---

# RNAV (GPS) RWY 29

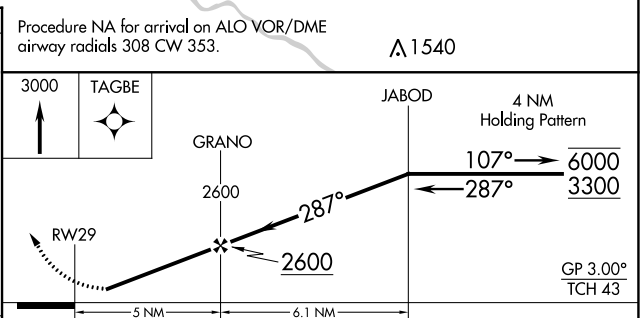
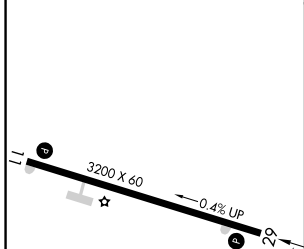
WAVERLY MUNI (C25)

RNP APCH - GPS.	MISSED APPROACH: Climb to 3000 direct TAGBE and hold.
<p>▼ Circling to Rwy 11 NA at night. Rwy 29 helicopter visibility reduction below 3/4 SM NA. Baro-VNAV NA. Use Waterloo altimeter setting.</p> <p>▲ NA</p>	

ALO ASOS <b>120.65</b>	WATERLOO APP CON* <b>118.9 251.15</b>	UNICOM <b>122.8 (CTAF) 0</b>
---------------------------	--	---------------------------------



ELEV 992	TDZE 992
----------	----------



CATEGORY	A	B	C	D
LPV DA	1287-1 295 (300-1)			NA
LNAV/VNAV DA	1334-1 342 (400-1)			NA
LNAV MDA	1600-1	608 (700-1)	1600-1 3/4 608 (700-1 3/4)	NA
<input checked="" type="checkbox"/> CIRCLING	1600-1 608 (700-1)	1620-1 628 (700-1)	1620-1 3/4 628 (700-1 3/4)	NA

REIL Rws 11 and 29 0  
MIRL Rwy 11-29 0

WAVERLY, IOWA  
Orig-A 11AUG22

42°45'N-92°30'W

# RNAV (GPS) RWY 29

WAVERLY MUNI (C25)

NC-3, 31 OCT 2024 to 28 NOV 2024

NC-3, 31 OCT 2024 to 28 NOV 2024