

| | | |
|-------------|----------|-------------|
| APP CRS | Rwy Idg | 3299 |
| 320° | TDZE | 297 |
| | Apt Elev | 297 |

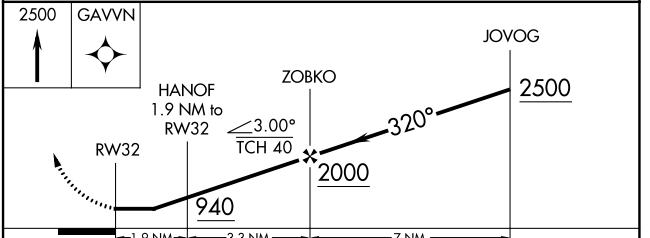
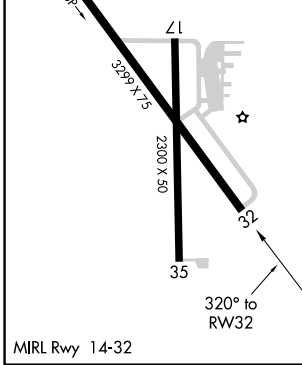
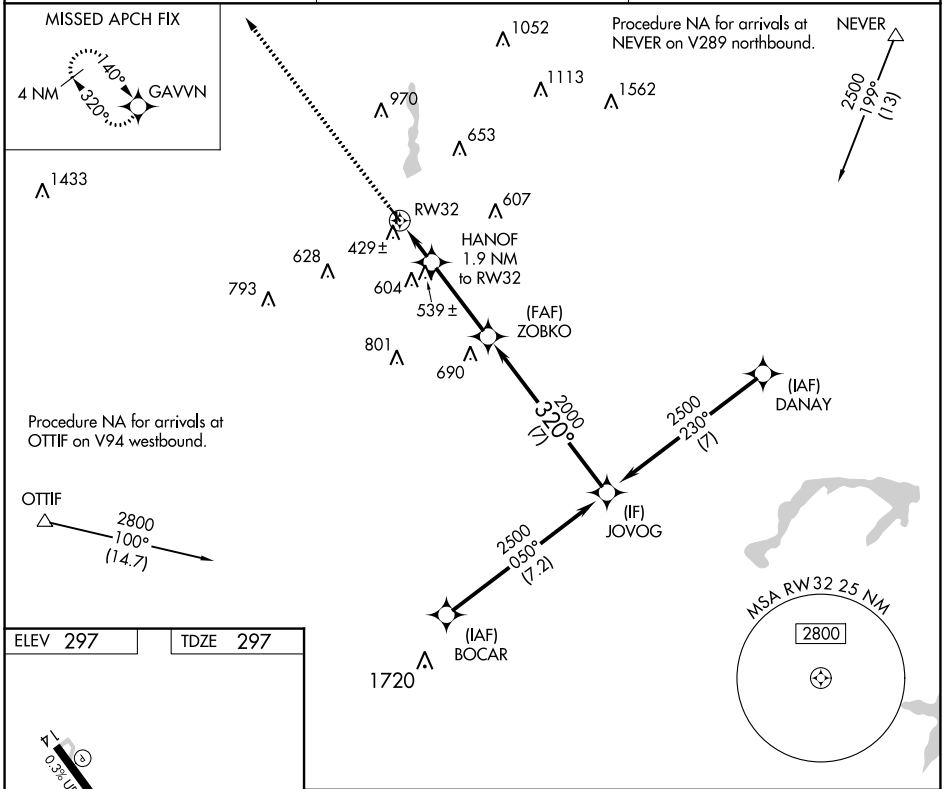
RNAV (GPS) RWY 32

GLADEWATER MUNI (Ø7F')

NA Rwy 32 helicopter visibility reduction below 1 SM NA. DME/DME RNP-0.3 NA. Procedure NA at night. Use Gilmer altimeter setting, when not received use Longview altimeter setting and increase all MDA 20 feet and increase LNAV Cat C visibility 1/8 SM.

MISSED APPROACH: Climb to 2500 direct GAVVN and hold.

| | | |
|-------------------------------|--|----------------------|
| JXI AWOS-3PT 120.25 | LONGVIEW APP CON ★ 124.275 257.975 | CTAF 122.9 |
|-------------------------------|--|----------------------|



| CATEGORY | A | B | C | D |
|----------|----------------------|-----------------------|------------------------|----|
| LNAV MDA | 720-1 | 423 (500-1) | 720-1¼ 423 (500-1¼) | NA |
| CIRCLING | 880-1 583 (600-1) | 1000-1 703 (800-1) | 1000-2 703 (800-2) | NA |

SC-2, 31 OCT 2024 to 28 NOV 2024

SC-2, 31 OCT 2024 to 28 NOV 2024