

APP CRS	Rwy Idg	3200
075°	TDZE	461
	Apt Elev	464

RNAV (GPS) RWY 8

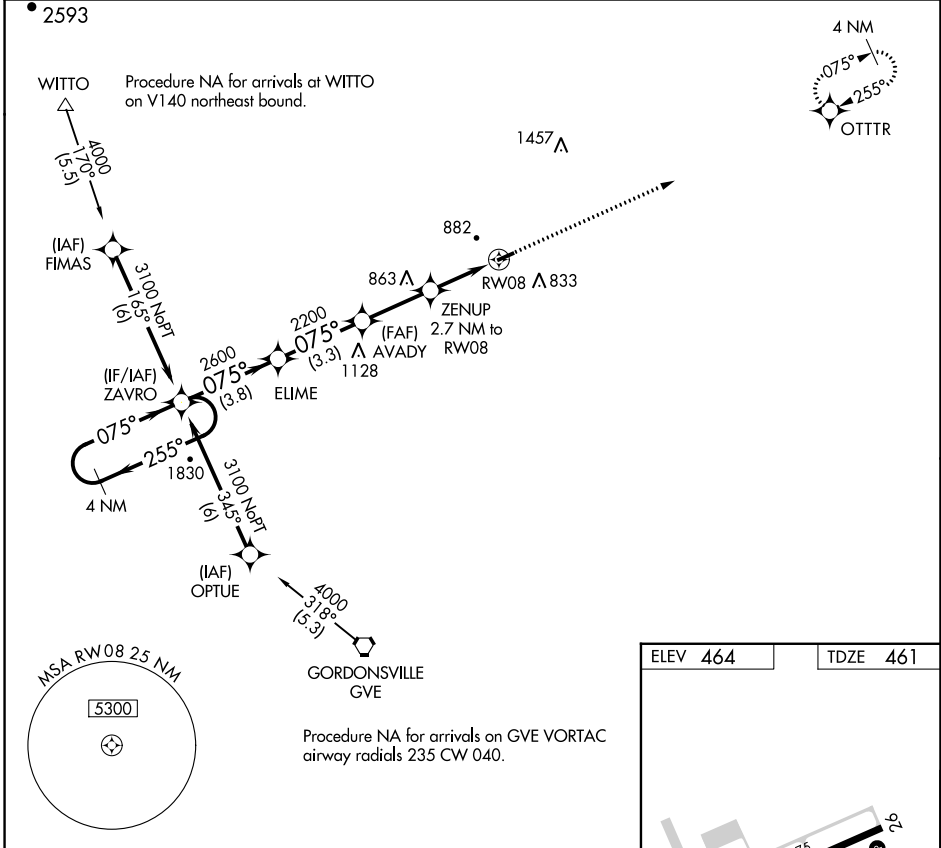
ORANGE COUNTY (OMH)

RNP APCH - GPS.

⚠ Circling Rwy 26 NA at night. When local altimeter setting not received, use Charlottesville altimeter setting and increase all MDA 80 feet. Rwy 8 helicopter visibility reduction below SM NA.

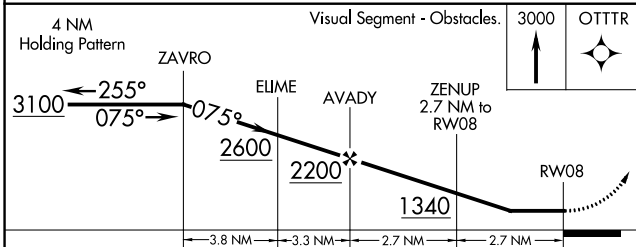
MISSED APPROACH:
Climb to 3000 direct OTTR and hold.

AWOS-3 118.075	POTOMAC APP CON 132.85 323.125	UNICOM 122.8 (CTAF) 0
--------------------------	--	---------------------------------



NE-3, 31 OCT 2024 to 28 NOV 2024

NE-3, 31 OCT 2024 to 28 NOV 2024



ELEV 464	TDZE 461
----------	----------

3200 X 75

0.6% UP

075°

MIRL Rwy 8-26 0

REIL Rwy 8 and 26 0

CATEGORY	A	B	C	D
LNAV MDA	1040-1	579 (600-1)		NA
C CIRCLING	1300-1¼	836 (900-1¼)		NA