

WAAS CH <b>40029</b> <b>W31A</b>	APP CRS <b>311°</b>	Rwy Idg <b>7000</b> TDZE <b>202</b> Apt Elev <b>208</b>
--	------------------------	---

# RNAV (GPS) RWY 31

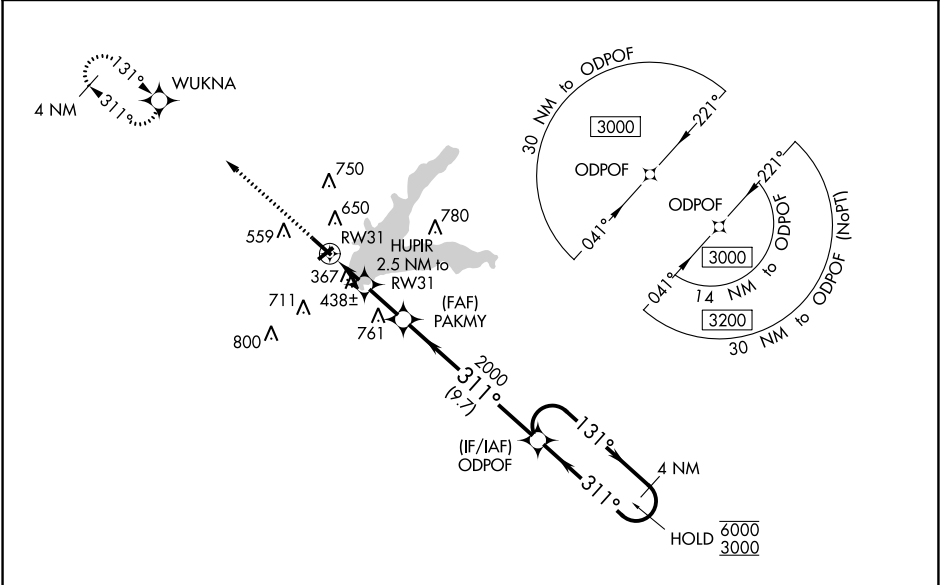
GRENADA MUNI (GNF)

RNP APCH.

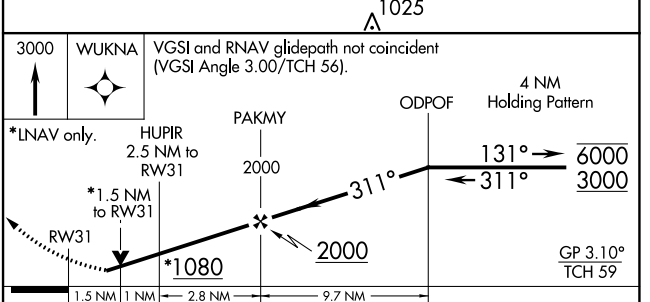
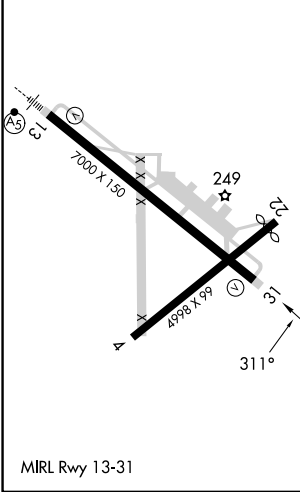
**⚠** Baro-VNAV and VDP NA when using Greenwood altimeter setting. Rwy 31 helicopter visibility reduction below  $\frac{3}{4}$  SM NA. For uncompensated Baro-VNAV systems, LNAV/VNAV NA below -9°C or above 46°C. When local altimeter setting not received use Greenwood altimeter setting: increase all DAs 65 feet and visibility LNAV/VNAV Cat C and D  $\frac{1}{8}$  SM; increase all MDAs 80 feet and visibility LNAV Cats C and D and Circling all Cats  $\frac{3}{8}$  SM. Circling Rwy 4, 22, NA at night.

**MISSED APPROACH:** Climb to 3000 direct WUKNA and hold.

AWOS-3PT <b>118.025</b>	MEMPHIS CENTER <b>128.5 279.55</b>	UNICOM <b>122.8 (CTAF)</b>
----------------------------	---------------------------------------	-------------------------------



ELEV 208	TDZE 202
----------	----------



CATEGORY	A	B	C	D
LPV DA		513-1	311 (400-1)	
LNAV/VNAV DA		679-1½	477 (500-1½)	
LNAV MDA	720-1	518 (600-1)	720-1¼	518 (600-1¼)
<b>C</b> CIRCLING	1000-1	792 (800-1)	1000-2¼ 792 (800-2¼)	1060-2¾ 852 (900-2¾)

SC-4, 31 OCT 2024 to 28 NOV 2024

SC-4, 31 OCT 2024 to 28 NOV 2024