

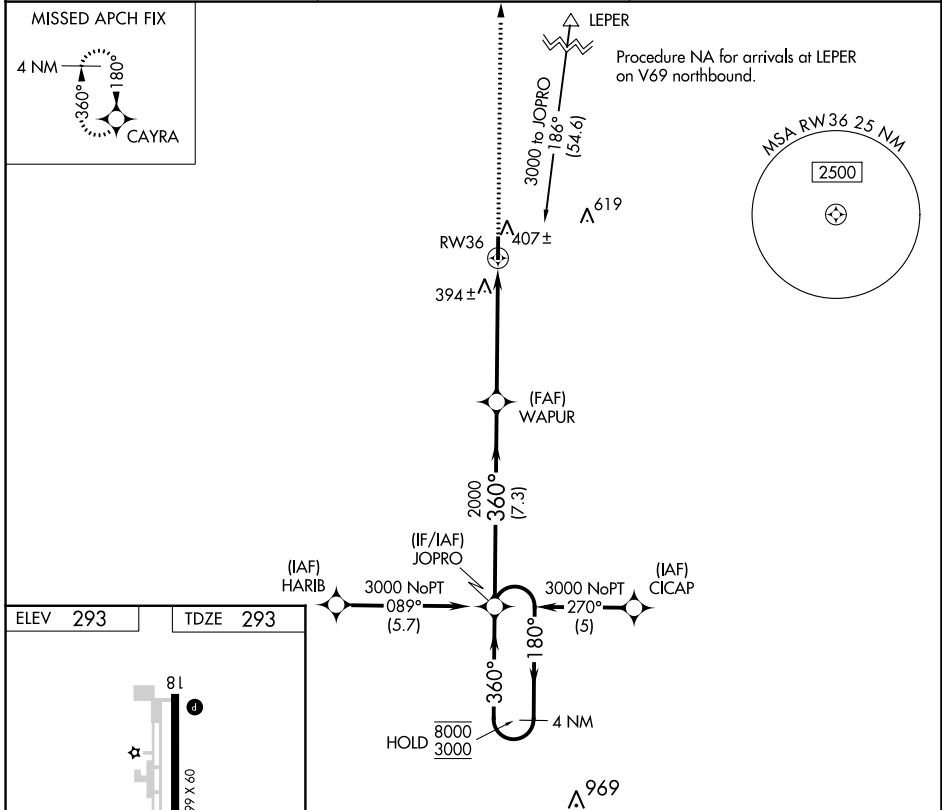
APP CRS	Rwy Idg	<b>4299</b>
<b>360°</b>	TDZE	<b>293</b>
	Apt Elev	<b>293</b>

# RNAV (GPS) RWY 36

CORNING MUNI (4M9)

RNP APCH-GPS.		MISSED APPROACH: Climb to 3000 direct CAYRA and hold.
<p><b>▽</b></p> <p><b>▲</b> Rwy 36 helicopter visibility reduction below 3/4 SM NA.</p>		

AWOS-3T <b>118.325</b>	MEMPHIS CENTER <b>120.075 289.4</b>	UNICOM <b>123.0 (CTAF) 0</b>
---------------------------	--	---------------------------------



ELEV 293	TDZE 293	4 NM Holding Pattern		3000	CAYRA
		JOPRO	WAPUR	1.2 NM to RW36	
		360°	360°	3.05° TCH 40	RW36
		7.3 NM	4 NM	1.2 NM	
REIL Rwy 18 and 36	MIRL Rwy 18-36				

CATEGORY	A	B	C	D
LNAV MDA	700-1	407 (500-1)	700-1 1/8 407 (500-1 1/8)	NA

CORNING, ARKANSAS

Orig-E 07OCT21

36°24'N-90°39'W

CORNING MUNI (4M9)

# RNAV (GPS) RWY 36

SC-1, 31 OCT 2024 to 28 NOV 2024

SC-1, 31 OCT 2024 to 28 NOV 2024