

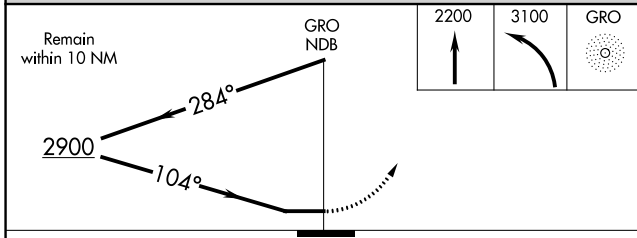
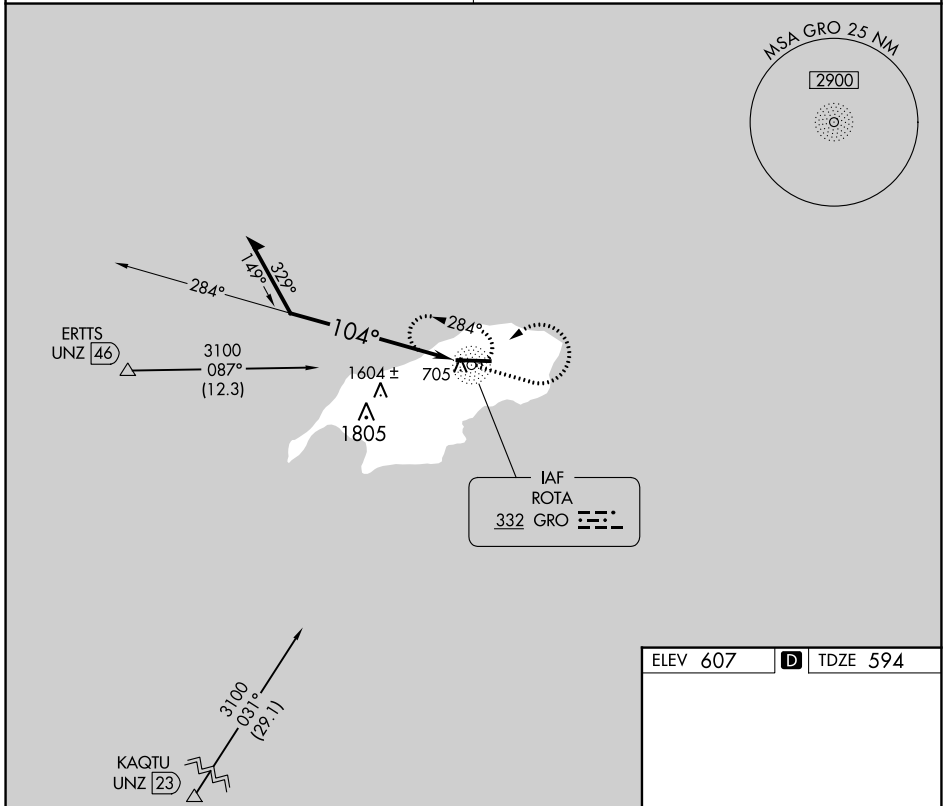
NDB GRO	APP CRS	Rwy Idg	7000
<b>332</b>	<b>104°</b>	TDZE	594
		Apt Elev	607

# NDB RWY 9

BENJAMIN TAISACAN MANGLONA INTL (GRO)(PGRO)

<p><b>⚠</b> When local altimeter setting not received, use Andersen AFB altimeter setting and increase all MDA 320 feet. Circling NA south of Rwy 9-27.</p>	<p><b>MISSED APPROACH:</b> Climb to 2200 then climbing left turn to 3100 direct GRO NDB and hold.</p>
---	---

<p>GUAM CERAP <b>120.5 263.0</b></p>	<p>CTAF <b>123.6</b></p>
--	------------------------------



ELEV 607	<b>D</b> TDZE 594
----------	-------------------

REIL Rwy 9 **Ⓛ**  
MIRL Rwy 9-27 **Ⓛ**

CATEGORY	A	B	C	D
S-9	1800-1¼ 1206 (1200-1¼)	1800-1½ 1206 (1200-1½)	1800-3	1206 (1200-3)
<b>C</b> CIRCLING	1800-1¼ 1193 (1200-1¼)	1800-1½ 1193 (1200-1½)	1800-3	1193 (1200-3)

# NDB RWY 9

PAC, 31 OCT 2024 to 26 DEC 2024

PAC, 31 OCT 2024 to 26 DEC 2024