

APP CRS	Rwy Idg	<b>7000</b>
<b>093°</b>	TDZE	<b>594</b>
	Apt Elev	<b>607</b>

# RNAV (GPS) RWY 9

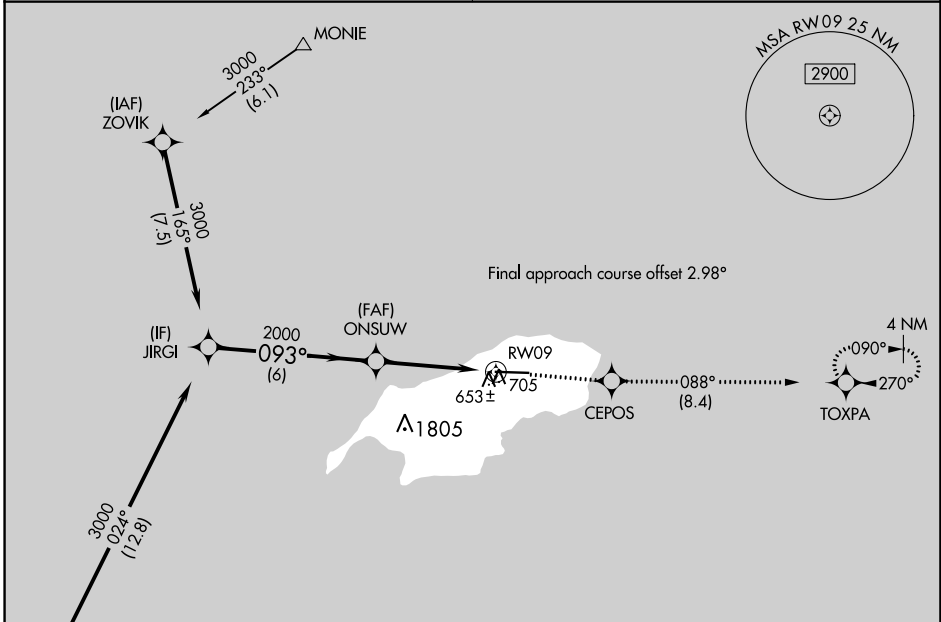
BENJAMIN TAISACAN MANGLONA INTL (GRO)(PGRO)

**▼** Circling NA south of Rwy 9-27. DME/DME RNP-0.3 NA. When local altimeter setting not received, use Andersen AFB altimeter setting and increase all MDA 320 feet, increase LNAV Cat C, D visibility 7/8 mile, Circling Cat C, D visibility 3/4 mile. VDP NA when using Andersen AFB altimeter setting.

**MISSED APPROACH:** Climb to 3000 direct CEPOS and on track 088° to TOXPA and hold.

GUAM CERAP  
**120.5 263.0**

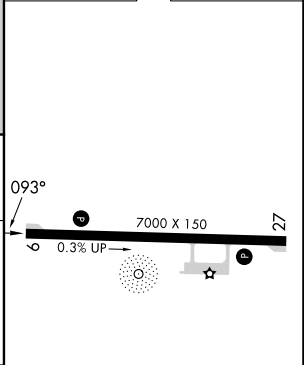
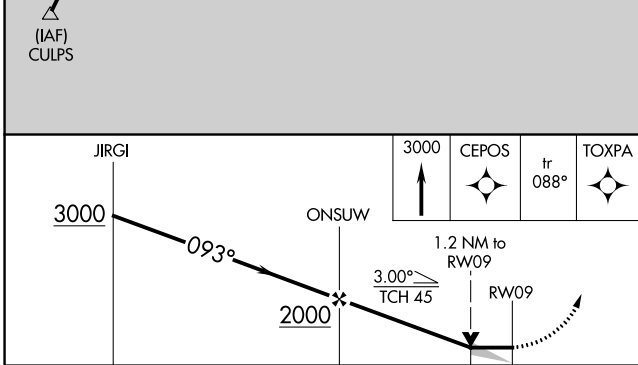
CTAF  
**123.6**



PAC, 31 OCT 2024 to 26 DEC 2024

PAC, 31 OCT 2024 to 26 DEC 2024

ELEV 607	<b>D</b> TDZE 594
----------	-------------------



	JIRGI		ONSUW		CEPOS		TOXPA	
	A	B	C	D	A	B	C	D
CATEGORY	A		B		C		D	
LNAV MDA	1000-1	406 (400-1)	1000-1 1/8	406 (400-1 1/8)				
<b>C</b> CIRCLING	1000-1 393 (400-1)	1060-1 453 (500-1)	1060-1 1/2 453 (500-1 1/2)	1160-2 553 (600-2)				

REIL Rwy 9 **D**  
MIRL Rwy 9-27 **D**

# RNAV (GPS) RWY 9