

WAAS CH 70504 W36A	APP CRS 356°	Rwy Idg 5201 TDZE 1277 Apt Elev 1277
--	------------------------	---

RNAV (GPS) RWY 36

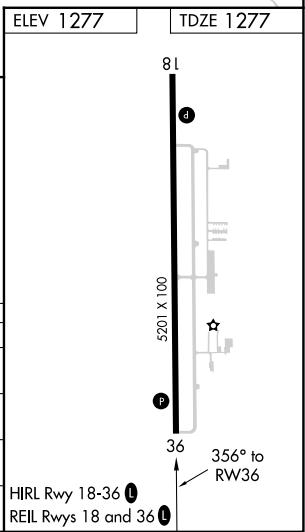
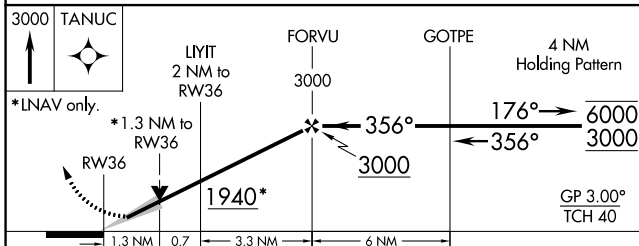
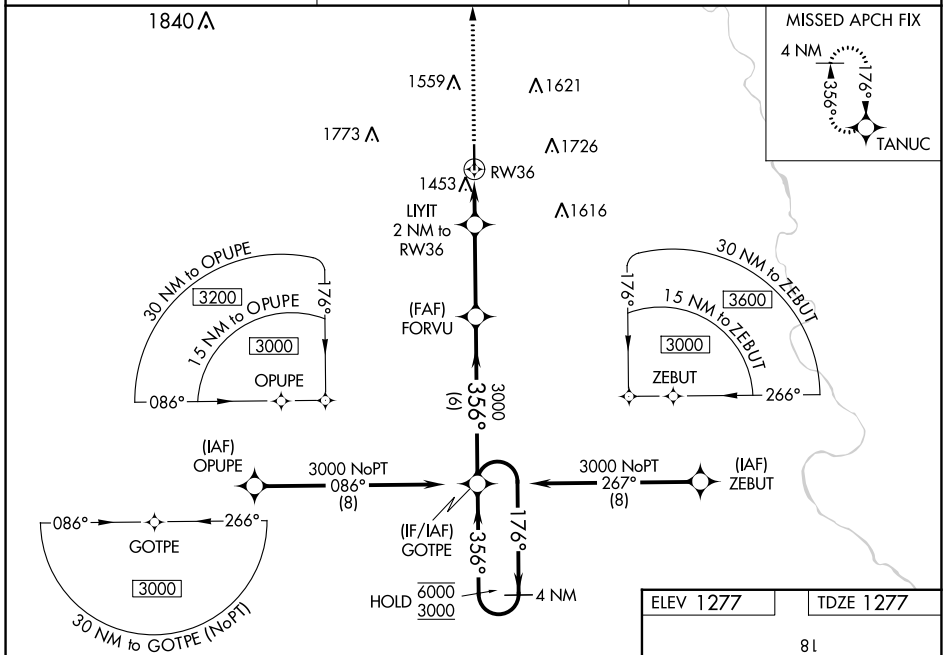
WELLINGTON MUNI (E/GT)

RNP APCH.

NA Baro-VNAV and VDP NA when using Wichita Dwight D Eisenhower Ntl altimeter setting. For uncompensated Baro-VNAV systems, LNAV/VNAV NA below -17°C or above 54°C. When local altimeter setting not received, use Wichita Dwight D Eisenhower Ntl altimeter setting: increase LPV DA to 1581 feet; increase LNAV/VNAV DA to 1668 feet and all visibilities 1/8 SM; increase all MDA 60 feet and Circling Cat C/D visibility 1/4 SM.

MISSED APPROACH: Climb to 3000 direct TANUC and hold.

AWOS-3P 118.875	WICHITA APP CON 134.85	UNICOM 122.8 (CTAF) 0
---------------------------	----------------------------------	--



CATEGORY	A	B	C	D
LPV DA		1527-1	250 (300-1)	
LNAV/VNAV DA		1614-1	337 (400-1)	
LNAV MDA	1720-1	443 (500-1)	1720-1 3/8	443 (500-1 3/8)
CIRCLING	1760-1	483 (500-1)	2040-2 1/4 763 (800-2 1/4)	2140-2 3/4 863 (900-2 3/4)

NC-2, 31 OCT 2024 to 28 NOV 2024

NC-2, 31 OCT 2024 to 28 NOV 2024