

APP CRS 321°	Rwy Idg 5000
	TDZE 3727
	Apt Elev 3730

RNAV (GPS) RWY 32

HOLYOKE (HEQ)

RNP APCH-GPS.

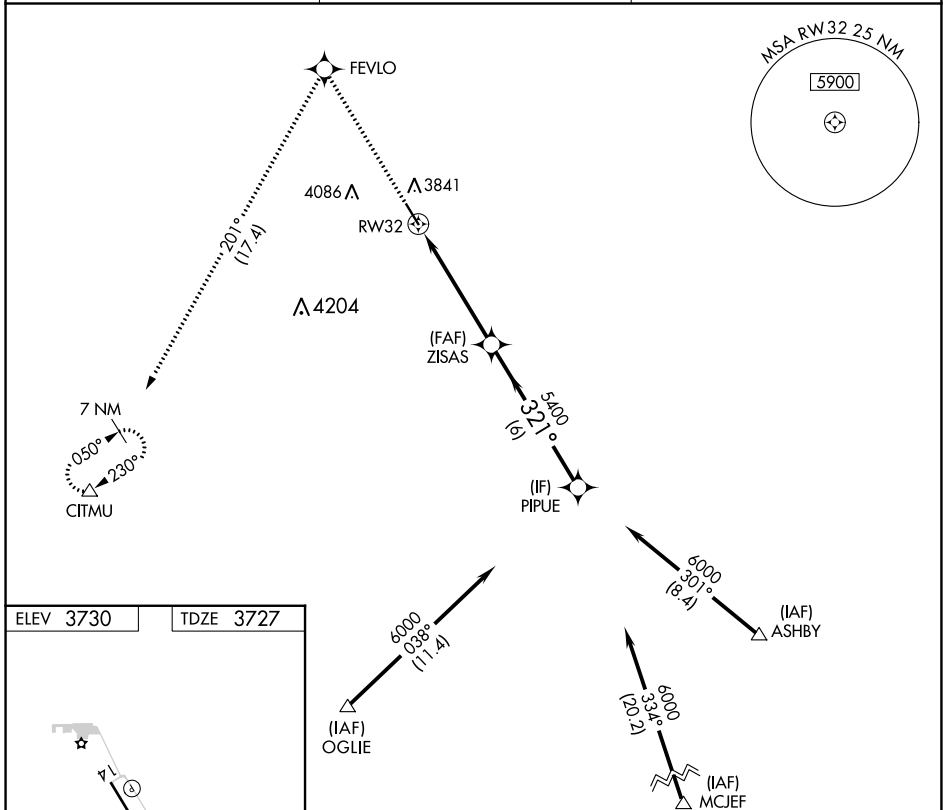
▼ VDP NA when using Sidney Muni/Lloyd W. Carr Fld altimeter setting.
▲ When local altimeter setting not received, use Sidney altimeter setting and increase all MDAs 200 feet and visibility Cat C/D $\frac{3}{8}$ SM. Rwy 32 helicopter visibility reduction below $\frac{3}{4}$ SM NA.

MISSED APPROACH: Climb to 6500
 direct FEVLO and on track 201° to
 CITMU and hold.

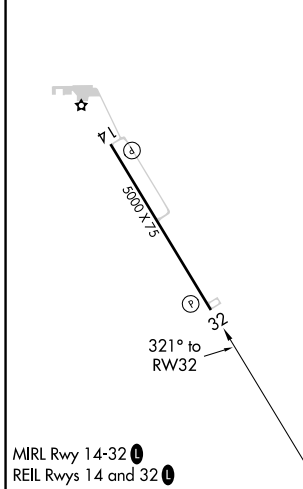
AWOS-3
119.275

DENVER CENTER
118.475 225.4

UNICOM
122.7 (CTAF) 0



ELEV 3730	TDZE 3727
-----------	-----------



6500	FEVLO	tr 201°	CITMU	PIPUÉ
↑	✧		△	
0.7 NM to RW32		ZISAS	6000	
RW32		5400	321°	
0.7 NM		4.4 NM	6 NM	
CATEGORY		A	B	C
LNVA MDA		4160-1	433 (500-1)	4160-1¼ 433 (500-1¼)

SW-1, 31 OCT 2024 to 28 NOV 2024

SW-1, 31 OCT 2024 to 28 NOV 2024