

WAAS CH 99742	APP CRS 122°	Rwy Idg TDZE Apt Elev	4248 59 66
W12A			

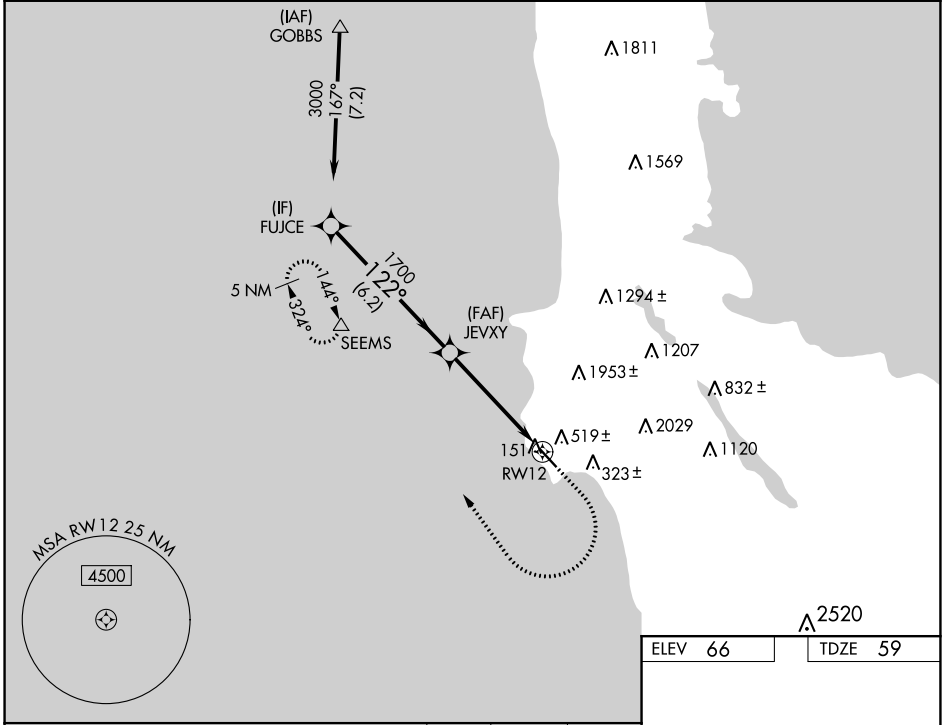
RNAV (GPS) RWY 12

HALF MOON BAY (HAF')

RNP APCH.
 ▼ Rwy 12 helicopter visibility reduction below 3/4 SM NA. For uncompensated Baro-VNAV systems, LNAV/VNAV NA below -15° C or above 54° C.

MISSED APPROACH: Climb to 700 then climbing right turn to 4000 direct SEEMS and hold, continue climb-in-hold to 4000.

AWOS 127.275	NORCAL APP CON 135.1 307.2	UNICOM 122.8 (CTAF)
------------------------	--------------------------------------	-------------------------------



SW-2, 31 OCT 2024 to 28 NOV 2024

SW-2, 31 OCT 2024 to 28 NOV 2024

VGSI and RNAV glidepath not coincident (VGSI Angle 3.00/TCH 24).

FUJCE	JEVXY	700	4000	SEEMS
3000	1700	↑	↷	△
GP 3.10° TCH 40	1700	*1 NM to RWY12		*LNAV only
6.2 NM		3.9 NM	1 NM	
CATEGORY	A	B	C	D
LPV DA	360-7/8		301 (300-7/8)	
LNAV/VNAV DA	652-13/4		593 (600-13/4)	
LNAV MDA	660-1	601 (600-1)	660-13/4	601 (600-13/4)

