

|  |                        |   |
|--|------------------------|---|
| WAAS<br>CH <b>78335</b><br><b>W14A</b> | APP CRS<br><b>143°</b> | Rwy Idg <b>4400</b><br>TDZE <b>1798</b><br>Apt Elev <b>1800</b> |
|--|------------------------|---|

# RNAV (GPS) RWY 14

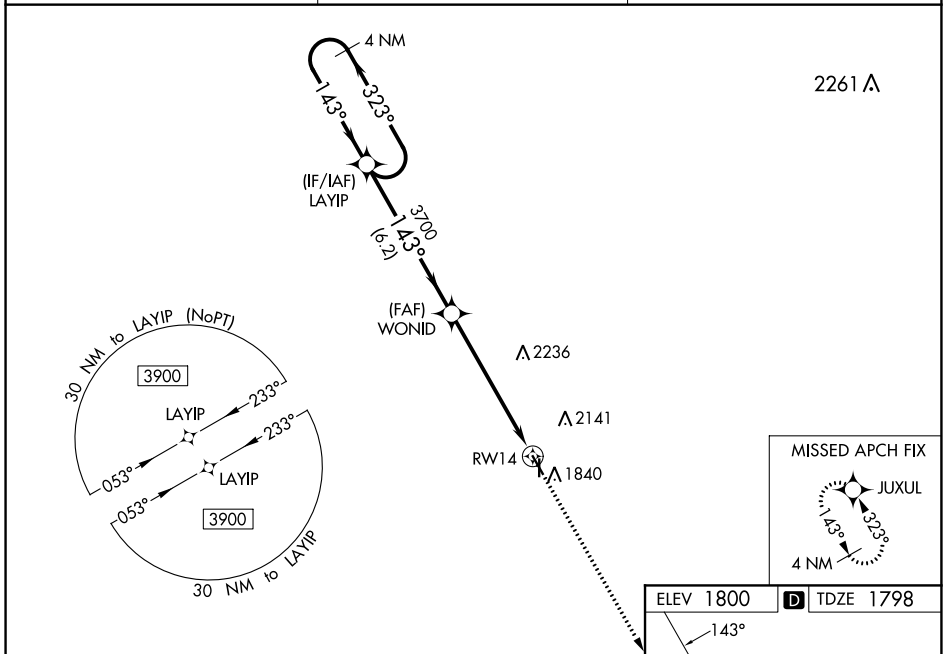
SMITH CENTER MUNI (K82)

RNP APCH-GPS.

For uncompensated Baro-VNAV systems, LNAV/VNAV NA below -18°C or above 54°C. When local altimeter setting not received, use Concordia altimeter setting and increase all DA 169 feet and all MDA 180 feet; increase LPV all Cats visibility ¼ SM, LNAV/VNAV all Cats visibility ½ SM, Circling Cat A visibility ¼ SM and Circling Cat B visibility ½ SM. Baro-VNAV and VDP NA with Concordia altimeter setting. Circling Rwy 36 NA at night.

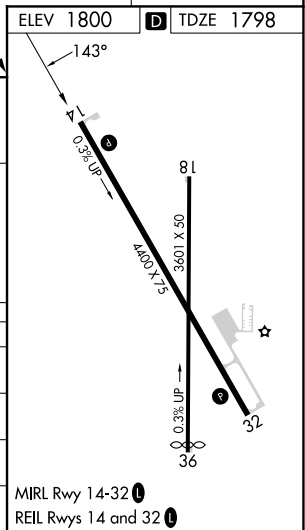
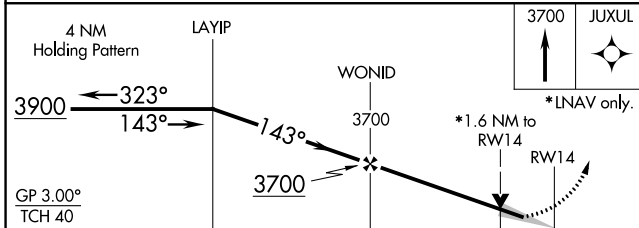
MISSED APPROACH:  
Climb to 3700 direct  
JUXUL and hold.

|                           |  |                                 |
|---------------------------|--|---------------------------------|
| AWOS-3PT<br><b>118.45</b> | MINNEAPOLIS CENTER<br><b>119.4 278.8</b> | UNICOM<br><b>122.8 (CTAF) 0</b> |
|---------------------------|--|---------------------------------|



NC-2, 31 OCT 2024 to 28 NOV 2024

NC-2, 31 OCT 2024 to 28 NOV 2024



| CATEGORY     | A                     | B                     | C | D  |
|--------------|-----------------------|-----------------------|---|----|
| LPV DA       | 1998-1                | 200 (200-1)           |   | NA |
| LNAV/VNAV DA | 2076-1                | 278 (300-1)           |   | NA |
| LNAV MDA     | 2320-1                | 522 (600-1)           |   | NA |
| CIRCLING     | 2480-1<br>680 (700-1) | 2580-1<br>780 (800-1) |   | NA |

MIRL Rwy 14-32 0  
REIL Rwy 14 and 32 0